

SH3GL1 Polyclonal Antibody

Catalog No: #30927

Package Size: #30927-1 50ul #30927-2 100ul

Orders: order@signalwayantibody.com

Support: tech@signalwayantibody.com

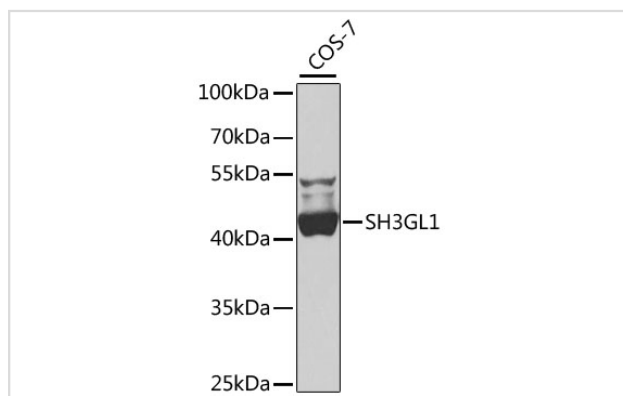
Description

Product Name	SH3GL1 Polyclonal Antibody
Host Species	Rabbit
Clonality	Polyclonal
Isotype	IgG
Purification	Affinity purification
Applications	WB,IHC
Species Reactivity	Human,Mouse,Rat
Immunogen Description	Recombinant fusion protein of human SH3GL1 (NP_003016.1).
Other Names	SH3GL1;CNSA1;EEN;SH3D2B;SH3P8
Accession No.	Uniprot:Q99961GeneID:6455
Uniprot	Q99961
GeneID	6455
Calculated MW	41kDa
SDS-PAGE MW	41kDa
Formulation	PBS with 0.02% sodium azide,50% glycerol,pH7.3.
Storage	Store at -20°C. Avoid freeze / thaw cycles.

Application Details

WB□1:500 - 1:2000IHC□1:100 - 1:200

Images



Western blot analysis of extracts of COS-7 cells, using SH3GL1 antibody.

Background

This gene encodes a member of the endophilin family of Src homology 3 domain-containing proteins. The encoded protein is involved in endocytosis and may also play a role in the cell cycle. Overexpression of this gene may play a role in leukemogenesis, and the encoded protein has been implicated in acute myeloid leukemia as a fusion partner of the myeloid-lymphoid leukemia protein. Pseudogenes of this gene are located on the long

arm of chromosomes 11 and 17. Alternatively spliced transcript variants encoding multiple isoforms have been observed for this gene.

Note: This product is for in vitro research use only