

TBCE Polyclonal Antibody

Catalog No: #30929



Package Size: #30929-1 50ul #30929-2 100ul

Orders: order@signalwayantibody.com
Support: tech@signalwayantibody.com

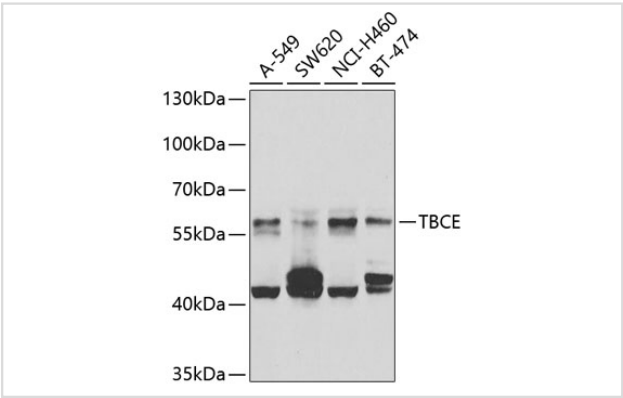
Description

Product Name	TBCE Polyclonal Antibody
Host Species	Rabbit
Clonality	Polyclonal
Isotype	IgG
Purification	Affinity purification
Applications	WB
Species Reactivity	Human
Immunogen Description	Recombinant fusion protein of human TBCE (NP_003184.1).
Other Names	TBCE; HRD; KCS; KCS1; PEAMO; pac2; tubulin folding cofactor E
Accession No.	Swiss-Prot#:Q15813NCBI Gene ID:6905
Uniprot	Q15813
GeneID	6905;
Calculated MW	59kDa
Formulation	Avoid freeze / thaw cycles. Buffer: PBS with 50% glycerol, pH7.4.
Storage	Store at -20°C

Application Details

WB 1:500 - 1:2000

Images



Western blot analysis of extracts of various cell lines, using TBCE at 1:1000 dilution.

Background

Cofactor E is one of four proteins (cofactors A, D, E, and C) involved in the pathway leading to correctly folded beta-tubulin from folding intermediates. Cofactors A and D are believed to play a role in capturing and stabilizing beta-tubulin intermediates in a quasi-native confirmation. Cofactor E binds to the cofactor D/beta-tubulin complex; interaction with cofactor C then causes the release of beta-tubulin polypeptides that are committed to the native state. Two transcript variants encoding the same protein have been found for this gene.

Note: This product is for in vitro research use only