

# SMAD2/SMAD3 Polyclonal Antibody

Catalog No: #30958



Package Size: #30958-1 50ul #30958-2 100ul

Orders: [order@signalwayantibody.com](mailto:order@signalwayantibody.com)  
Support: [tech@signalwayantibody.com](mailto:tech@signalwayantibody.com)

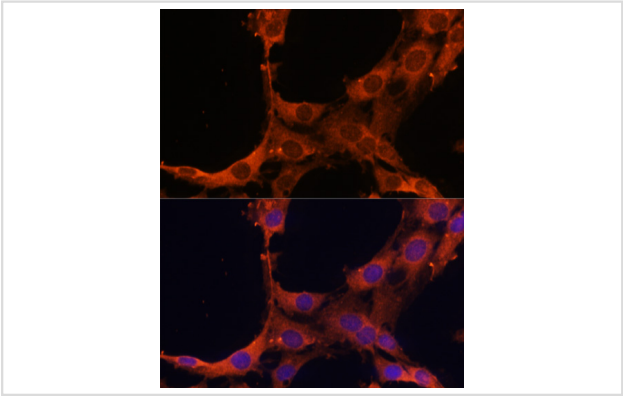
## Description

Product Name	SMAD2/SMAD3 Polyclonal Antibody
Host Species	Rabbit
Clonality	Polyclonal
Isotype	IgG
Purification	Affinity purification
Applications	WB,IHC,IF
Species Reactivity	Human,Mouse,Rat
Immunogen Description	Recombinant fusion protein of human SMAD3 (NP_005893.1).
Other Names	HSPC193;HsT17436;JV15-2;LDS1C;LDS3;MADH3
Accession No.	Swiss-Prot#:P84022/Q15796NCBI Gene ID:4087/4088
Uniprot	P84022
GeneID	4088;
Calculated MW	56-60kDa
Formulation	Avoid freeze / thaw cycles. Buffer: PBS with 50% glycerol, pH7.4.
Storage	Store at -20°C

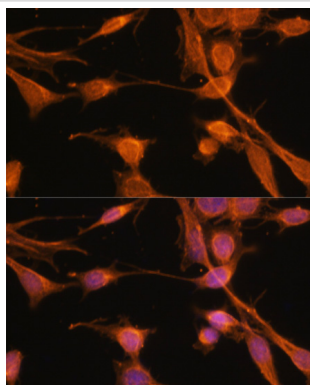
## Application Details

WB 1:500 - 1:2000IHC 1:50 - 1:200IF 1:50 - 1:200

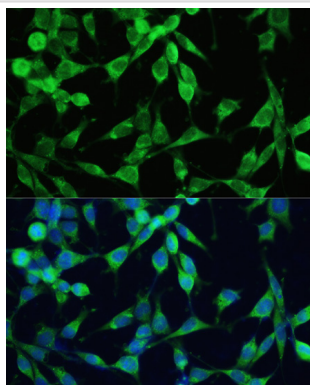
## Images



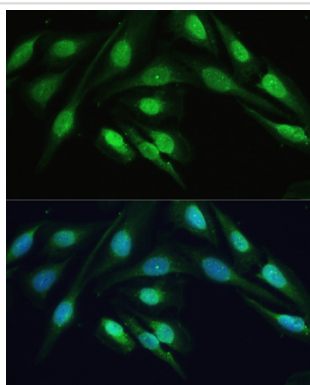
Immunofluorescence analysis of C6 cells using SMAD2 at dilution of 1:100. Blue: DAPI for nuclear staining.



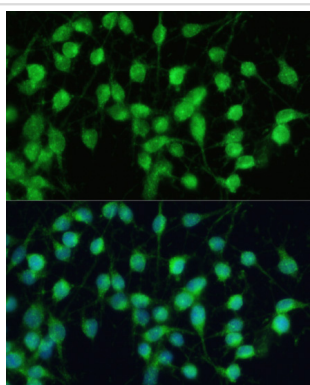
Immunofluorescence analysis of NIH-3T3 cells using SMAD2 at dilution of 1:100. Blue: DAPI for nuclear staining.



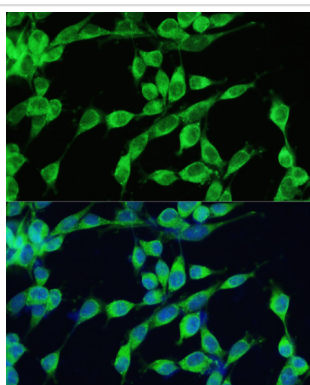
Immunofluorescence analysis of NIH-3T3 cells using SMAD2 at dilution of 1:100. Blue: DAPI for nuclear staining.



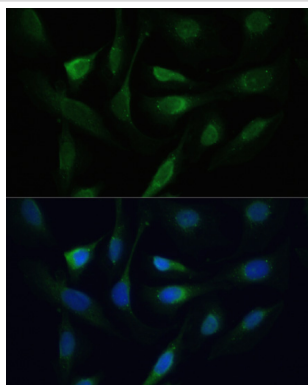
Immunofluorescence analysis of U-2 OS cells using SMAD2 at dilution of 1:100. Blue: DAPI for nuclear staining.



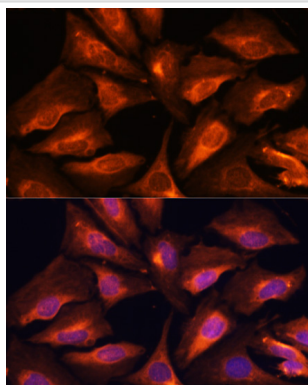
Immunofluorescence analysis of C6 cells using SMAD2 at dilution of 1:100. Blue: DAPI for nuclear staining.



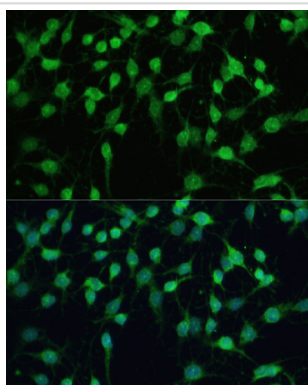
Immunofluorescence analysis of NIH-3T3 cells using SMAD2 at dilution of 1:100. Blue: DAPI for nuclear staining.



Immunofluorescence analysis of U-2 OS cells using SMAD2 at dilution of 1:100. Blue: DAPI for nuclear staining.



Immunofluorescence analysis of U-2 OS cells using SMAD2 at dilution of 1:100. Blue: DAPI for nuclear staining.



Immunofluorescence analysis of C6 cells using SMAD2 at dilution of 1:100. Blue: DAPI for nuclear staining.

## Background

The protein encoded by this gene belongs to the SMAD, a family of proteins similar to the gene products of the *Drosophila* gene 'mothers against decapentaplegic' (Mad) and the *C. elegans* gene Sma. SMAD proteins are signal transducers and transcriptional modulators that mediate multiple signaling pathways. This protein functions as a transcriptional modulator activated by transforming growth factor-beta and is thought to play a role in the regulation of carcinogenesis.

Note: This product is for in vitro research use only