

# CHN1 Polyclonal Antibody

Catalog No: #30959



Package Size: #30959-1 50ul #30959-2 100ul

Orders: [order@signalwayantibody.com](mailto:order@signalwayantibody.com)  
Support: [tech@signalwayantibody.com](mailto:tech@signalwayantibody.com)

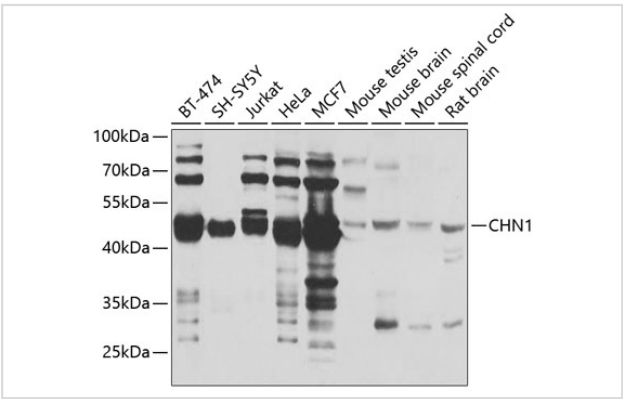
## Description

Product Name	CHN1 Polyclonal Antibody
Host Species	Rabbit
Clonality	Polyclonal
Isotype	IgG
Purification	Affinity purification
Applications	WB
Species Reactivity	Human,Mouse,Rat
Immunogen Description	Recombinant fusion protein of human CHN1 (NP_001813.1).
Other Names	CHN1;ARHGAP2;CHN;DURS2;NC;RHOGAP2
Accession No.	Uniprot:P15882GenelD:1123
Uniprot	P15882
GenelD	1123
Calculated MW	53kDa
SDS-PAGE MW	53kDa
Formulation	PBS with 0.02% sodium azide,50% glycerol,pH7.3.
Storage	Store at -20°C. Avoid freeze / thaw cycles.

## Application Details

WB 1:500 - 1:2000

## Images



Western blot analysis of extracts of various cell lines, using CHN1 antibody.

## Background

This gene encodes GTPase-activating protein for ras-related p21-rac and a phorbol ester receptor. It is predominantly expressed in neurons, and plays an important role in neuronal signal-transduction mechanisms. Mutations in this gene are associated with Duane's retraction syndrome 2 (DURS2). Alternatively spliced transcript variants encoding different isoforms have been described for this gene.

---

Note: This product is for in vitro research use only