

# CSRP2 Polyclonal Antibody

Catalog No: #30961



Package Size: #30961-1 50ul #30961-2 100ul

Orders: [order@signalwayantibody.com](mailto:order@signalwayantibody.com)  
Support: [tech@signalwayantibody.com](mailto:tech@signalwayantibody.com)

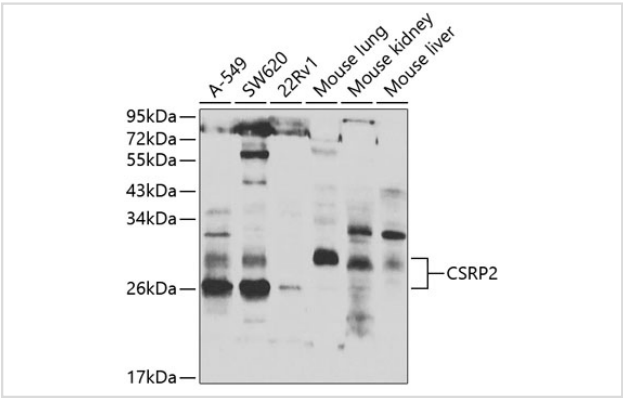
## Description

Product Name	CSRP2 Polyclonal Antibody
Host Species	Rabbit
Clonality	Polyclonal
Isotype	IgG
Purification	Affinity purification
Applications	WB
Species Reactivity	Human,Mouse
Immunogen Description	Recombinant fusion protein of human CSRP2 (NP_001312.1).
Other Names	CSRP2; CRP2; LMO5; SmLIM; cysteine and glycine-rich protein 2
Accession No.	Swiss-Prot#:Q16527NCBI Gene ID:1466
Uniprot	Q16527
GeneID	1466;
Calculated MW	26-30kDa
Formulation	Avoid freeze / thaw cycles. Buffer: PBS with 50% glycerol, pH7.4.
Storage	Store at -20°C

## Application Details

WB 1:500 - 1:2000

## Images



Western blot analysis of extracts of various cell lines, using CSRP2 at 1:1000 dilution.

## Background

CSRP2 is a member of the CSRP family of genes, encoding a group of LIM domain proteins, which may be involved in regulatory processes important for development and cellular differentiation. CRP2 contains two copies of the cysteine-rich amino acid sequence motif (LIM) with putative zinc-binding activity, and may be involved in regulating ordered cell growth. Other genes in the family include CSRP1 and CSRP3. Alternative splicing results in multiple transcript variants.

---

Note: This product is for in vitro research use only