

CYP2F1 Polyclonal Antibody

Catalog No: #30962



Package Size: #30962-1 50ul #30962-2 100ul

Orders: order@signalwayantibody.com
Support: tech@signalwayantibody.com

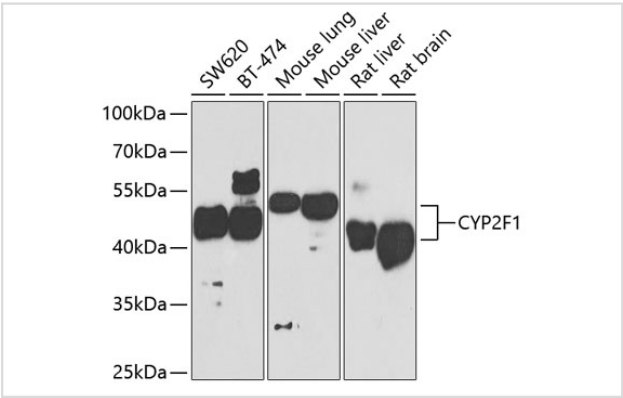
Description

Product Name	CYP2F1 Polyclonal Antibody
Host Species	Rabbit
Clonality	Polyclonal
Isotype	IgG
Purification	Affinity purification
Applications	WB,IHC
Species Reactivity	Human,Mouse,Rat
Immunogen Description	Recombinant fusion protein of human CYP2F1 (NP_000765.2).
Other Names	CYP2F1; C2F1; CYP2F; CYPIIF1; cytochrome P450 2F1
Accession No.	Swiss-Prot#:P24903NCBI Gene ID:1572
Uniprot	P24903
GeneID	1572;
Calculated MW	46-54kDa
Formulation	Avoid freeze / thaw cycles. Buffer: PBS with 50% glycerol, pH7.4.
Storage	Store at -20°C

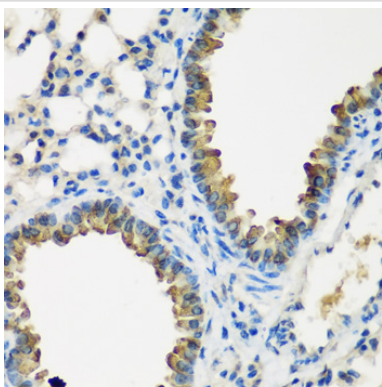
Application Details

WB 1:500 - 1:2000IHC 1:50 - 1:200

Images



Western blot analysis of extracts of various cell lines, using CYP2F1 at 1:1000 dilution.



Immunohistochemistry of paraffin-embedded mouse lung using CYP2F1 at dilution of 1:200 (40x lens).

Background

This gene encodes a member of the cytochrome P450 superfamily of enzymes. The cytochrome P450 proteins are monooxygenases which catalyze many reactions involved in drug metabolism and synthesis of cholesterol, steroids and other lipids. This protein localizes to the endoplasmic reticulum and is known to dehydrogenate 3-methylindole, an endogenous toxin derived from the fermentation of tryptophan, as well as xenobiotic substrates such as naphthalene and ethoxycoumarin. This gene is part of a large cluster of cytochrome P450 genes from the CYP2A, CYP2B and CYP2F subfamilies on chromosome 19q.

Note: This product is for in vitro research use only