

# CAST Polyclonal Antibody

Catalog No: #30990



Package Size: #30990-1 50ul #30990-2 100ul

Orders: [order@signalwayantibody.com](mailto:order@signalwayantibody.com)  
Support: [tech@signalwayantibody.com](mailto:tech@signalwayantibody.com)

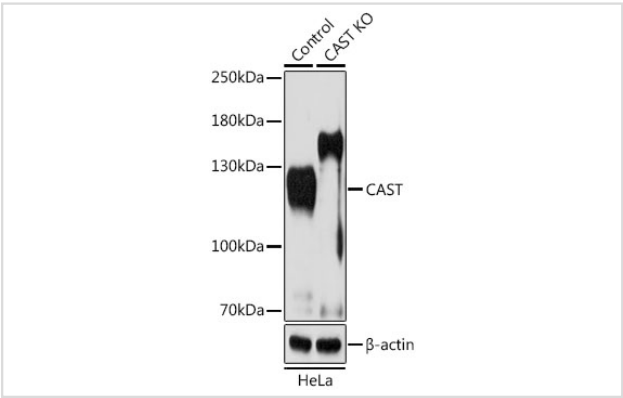
## Description

Product Name	CAST Polyclonal Antibody
Host Species	Rabbit
Clonality	Polyclonal
Isotype	IgG
Purification	Affinity purification
Applications	WB
Species Reactivity	Human,Mouse,Rat
Immunogen Description	A synthetic peptide of human CAST (NP_001177371.1).
Other Names	CAST; BS-17; PLACK; calpastatin
Accession No.	Swiss-Prot#:P20810NCBI Gene ID:831
Uniprot	P20810
GeneID	831;
Calculated MW	130kDa
Formulation	Avoid freeze / thaw cycles. Buffer: PBS with 50% glycerol, pH7.4.
Storage	Store at -20°C

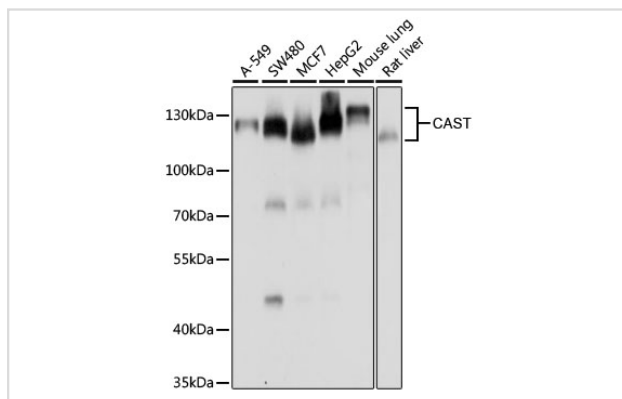
## Application Details

WB 1:500 - 1:2000

## Images



Western blot analysis of extracts from normal (control) and CAST knockout (KO) HeLa cells, using CAST at 1:1000 dilution.



Western blot analysis of extracts of various cell lines, using CAST at 1:1000 dilution.

## Background

The protein encoded by this gene is an endogenous calpain (calcium-dependent cysteine protease) inhibitor. It consists of an N-terminal domain L and four repetitive calpain-inhibition domains (domains 1-4), and it is involved in the proteolysis of amyloid precursor protein. The calpain/calpastatin system is involved in numerous membrane fusion events, such as neural vesicle exocytosis and platelet and red-cell aggregation. The encoded protein is also thought to affect the expression levels of genes encoding structural or regulatory proteins. Alternatively spliced transcript variants encoding different isoforms have been described.

Note: This product is for in vitro research use only