

# FLVCR2 Polyclonal Antibody

Catalog No: #31345



Package Size: #31345-1 50ul #31345-2 100ul

Orders: [order@signalwayantibody.com](mailto:order@signalwayantibody.com)  
Support: [tech@signalwayantibody.com](mailto:tech@signalwayantibody.com)

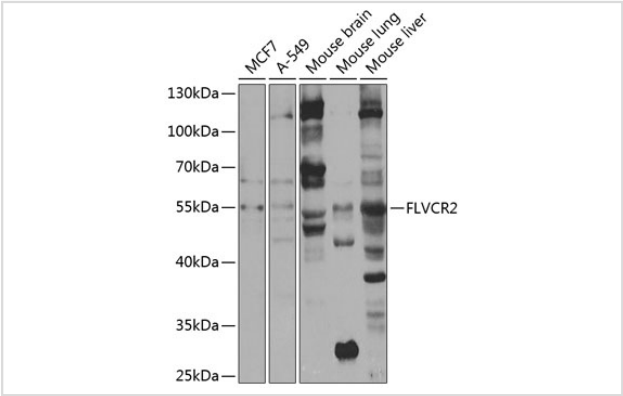
## Description

Product Name	FLVCR2 Polyclonal Antibody
Host Species	Rabbit
Clonality	Polyclonal
Isotype	IgG
Purification	Affinity purification
Applications	WB
Species Reactivity	Human,Mouse
Immunogen Description	Recombinant fusion protein of human FLVCR2 (NP_060261.2).
Other Names	FLVCR2; C14orf58; CCT; EPV; FLVCRL14q; MFSD7C; PVHH; feline leukemia virus subgroup C receptor-related protein 2
Accession No.	Swiss-Prot#:Q9UPI3NCBI Gene ID:55640
Uniprot	Q9UPI3
GeneID	55640;
Calculated MW	57kDa
Formulation	Avoid freeze / thaw cycles. Buffer: PBS with 50% glycerol, pH7.4.
Storage	Store at -20°C

## Application Details

WB 1:500 - 1:2000

## Images



Western blot analysis of extracts of various cell lines, using FLVCR2 at 1:1000 dilution.

## Background

This gene encodes a member of the major facilitator superfamily. The encoded transmembrane protein is a calcium transporter. Unlike the related protein feline leukemia virus subgroup C receptor 1, the protein encoded by this locus does not bind to feline leukemia virus subgroup C envelope protein. The encoded protein may play a role in development of brain vascular endothelial cells, as mutations at this locus have been associated with

proliferative vasculopathy and hydranencephaly-hydrocephaly syndrome. Alternatively spliced transcript variants have been described.

---

Note: This product is for in vitro research use only