

CPN1 Polyclonal Antibody

Catalog No: #31369



Package Size: #31369-1 50ul #31369-2 100ul

Orders: order@signalwayantibody.com
Support: tech@signalwayantibody.com

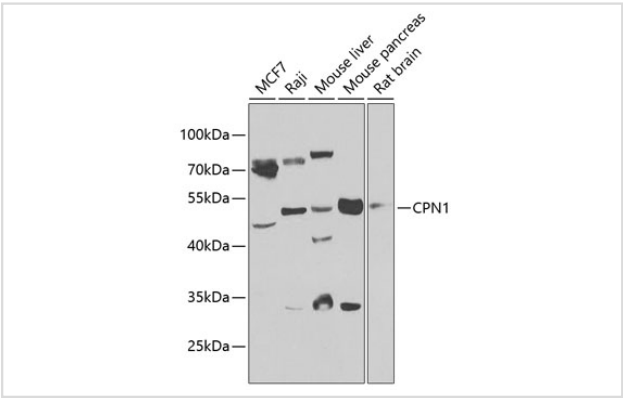
Description

Product Name	CPN1 Polyclonal Antibody
Host Species	Rabbit
Clonality	Polyclonal
Isotype	IgG
Purification	Affinity purification
Applications	WB
Species Reactivity	Human,Mouse,Rat
Immunogen Description	Recombinant fusion protein of human CPN1 (NP_001299.1).
Other Names	CPN1; CPN; SCPN; carboxypeptidase N subunit 1
Accession No.	Swiss-Prot#:P15169NCBI Gene ID:1369
Uniprot	P15169
GeneID	1369;
Calculated MW	52kDa
Formulation	Avoid freeze / thaw cycles. Buffer: PBS with 50% glycerol, pH7.4.
Storage	Store at -20°C

Application Details

WB 1:500 - 1:2000

Images



Western blot analysis of extracts of various cell lines, using CPN1 at 1:1000 dilution.

Background

Carboxypeptidase N is a plasma metallo-protease that cleaves basic amino acids from the C terminal of peptides and proteins. The enzyme is important in the regulation of peptides like kinins and anaphylatoxins, and has also been known as kininase-1 and anaphylatoxin inactivator. This enzyme is a tetramer comprised of two identical regulatory subunits and two identical catalytic subunits; this gene encodes the catalytic subunit. Mutations in this gene can be associated with angioedema or chronic urticaria resulting from carboxypeptidase N deficiency.

Note: This product is for in vitro research use only