

# MTX1 Polyclonal Antibody

Catalog No: #31374



Package Size: #31374-1 50ul #31374-2 100ul

Orders: [order@signalwayantibody.com](mailto:order@signalwayantibody.com)  
Support: [tech@signalwayantibody.com](mailto:tech@signalwayantibody.com)

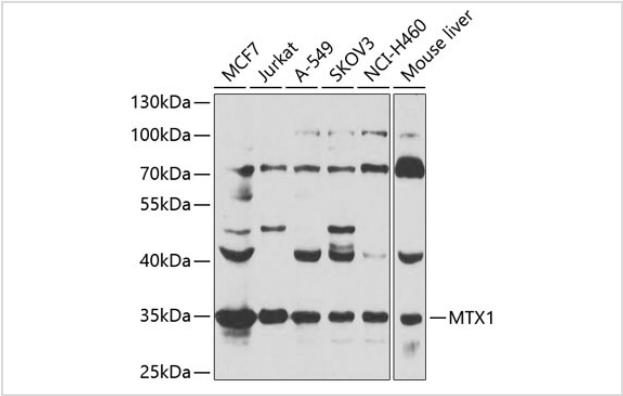
## Description

Product Name	MTX1 Polyclonal Antibody
Host Species	Rabbit
Clonality	Polyclonal
Isotype	IgG
Purification	Affinity purification
Applications	WB,IF
Species Reactivity	Human,Mouse,Rat
Immunogen Description	Recombinant fusion protein of human MTX1 (NP_942584.2).
Other Names	MTX1;MTX;MTXN;metaxin-1
Accession No.	Uniprot:Q13505GeneID:4580
Uniprot	Q13505
GeneID	4580
Calculated MW	35kDa
SDS-PAGE MW	35kDa
Formulation	PBS with 0.02% sodium azide,50% glycerol,pH7.3.
Storage	Store at -20°C. Avoid freeze / thaw cycles.

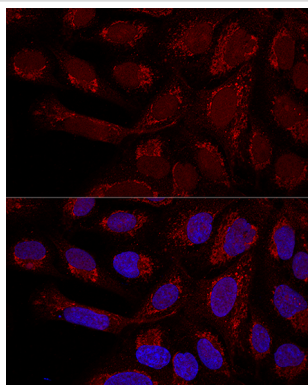
## Application Details

WB 1:500 - 1:2000IF 1:50 - 1:200

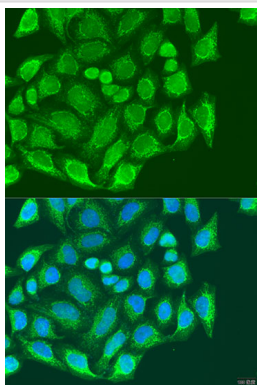
## Images



Western blot analysis of extracts of various cell lines, using MTX1 antibody.



Confocal immunofluorescence analysis of U2OS cells using MTX1 Polyclonal Antibody.



Immunofluorescence analysis of U2OS cells using MTX1 antibody.

## Background

METAXINs are proteins located in the outer membrane of the mammalian mitochondrion. METAXIN 1 was characterized firstly and was found to play a role in the import of mitochondrial precursor proteins. It may also play a role in the assembly of b-barrel proteins into the outer membrane. METAXIN1 was reported to be essential for survival of the postimplantation mouse embryo. METAXIN 1 has multiple transcripts. The full length one has 466 amino acids, with calculated MW of 62 kDa. Metaxin 1 interacts with metaxin 2, a novel related protein associated with the mammalian mitochondrial outer membrane and form complex in the mitochondrion outer membrane.

Note: This product is for in vitro research use only