

PRSS2 Polyclonal Antibody

Catalog No: #31379

Package Size: #31379-1 50ul #31379-2 100ul

Orders: order@signalwayantibody.comSupport: tech@signalwayantibody.com

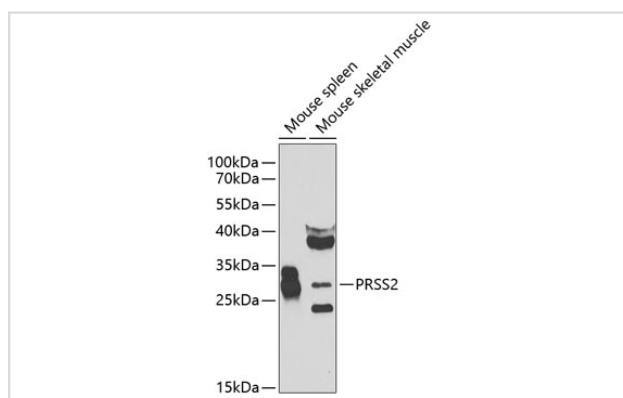
Description

Product Name	PRSS2 Polyclonal Antibody
Host Species	Rabbit
Clonality	Polyclonal
Isotype	IgG
Purification	Affinity purification
Applications	WB
Species Reactivity	Human,Mouse
Immunogen Description	Recombinant fusion protein of human PRSS2 (NP_002761.1).
Other Names	PRSS2; TRY2; TRY8; TRYP2; trypsin-2
Accession No.	Swiss-Prot#:P07478NCBI Gene ID:5645
Uniprot	P07478
GeneID	5645;
Calculated MW	26kDa
Formulation	Avoid freeze / thaw cycles. Buffer: PBS with 50% glycerol, pH7.4.
Storage	Store at -20°C

Application Details

WB □ 1:500 - 1:2000

Images



Western blot analysis of extracts of various cell lines, using PRSS2 at 1:1000 dilution.

Background

This gene belongs to the trypsin family of serine proteases and encodes anionic trypsinogen. It is part of a cluster of trypsinogen genes that are located within the T cell receptor beta locus. Enzymes of this family cleave peptide bonds that follow lysine or arginine residues. This protein is found at high levels in pancreatic juice and its upregulation is a characteristic feature of pancreatitis. This protein has also been found to activate pro-urokinase in ovarian tumors, suggesting a function in tumor invasion. In addition, this enzyme is able to cleave across the type II collagen triple

helix in rheumatoid arthritis synovitis tissue, potentially participating in the degradation of type II collagen-rich cartilage matrix. Alternative splicing results in multiple transcript variants.

Note: This product is for in vitro research use only