

MTCH1 Polyclonal Antibody

Catalog No: #31427

Package Size: #31427-1 50ul #31427-2 100ul

Orders: order@signalwayantibody.comSupport: tech@signalwayantibody.com

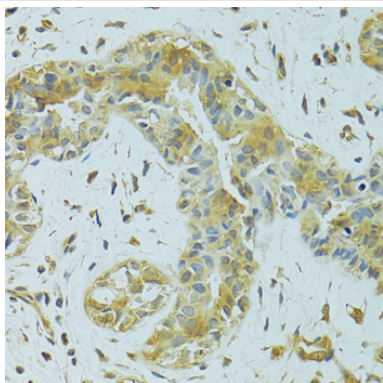
Description

Product Name	MTCH1 Polyclonal Antibody
Host Species	Rabbit
Clonality	Polyclonal
Isotype	IgG
Purification	Affinity purification
Applications	WB,IHC
Species Reactivity	Human,Mouse,Rat
Immunogen Description	Recombinant fusion protein of human MTCH1 (NP_001258570.1).
Other Names	MTCH1; CGI-64; PIG60; PSAP; SLC25A49; mitochondrial carrier 1
Accession No.	Swiss-Prot#:Q9NZJ7NCBI Gene ID:23787
Uniprot	Q9NZJ7
GeneID	23787;
Calculated MW	45-50kDa
Formulation	Avoid freeze / thaw cycles. Buffer: PBS with 50% glycerol, pH7.4.
Storage	Store at -20°C

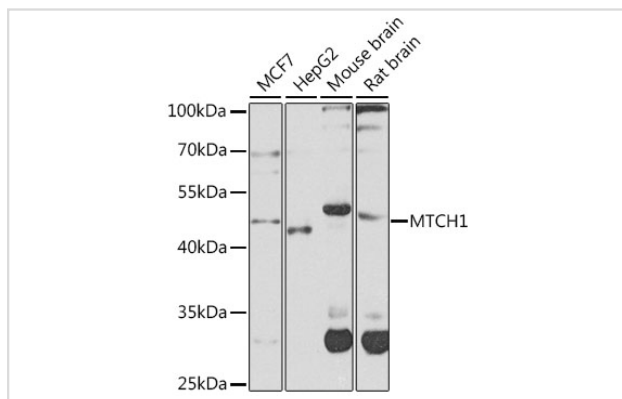
Application Details

WB□1:500 - 1:2000IHC□1:50 - 1:200

Images



Immunohistochemistry of paraffin-embedded human breast cancer using MTCH1 at dilution of 1:100 (40x lens).



Western blot analysis of extracts of various cell lines, using MTCH1 at 1:1000 dilution.

Background

This gene encodes a member of the mitochondrial carrier family. The encoded protein is localized to the mitochondrion inner membrane and induces apoptosis independent of the proapoptotic proteins Bax and Bak. Pseudogenes on chromosomes 6 and 11 have been identified for this gene. Alternatively spliced transcript variants encoding multiple isoforms have been observed.

Note: This product is for in vitro research use only