

ADH1C Polyclonal Antibody

Catalog No: #31433



Package Size: #31433-1 50ul #31433-2 100ul

Orders: order@signalwayantibody.com
Support: tech@signalwayantibody.com

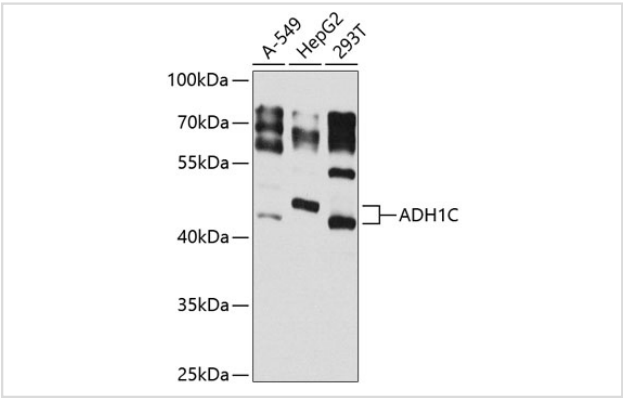
Description

Product Name	ADH1C Polyclonal Antibody
Host Species	Rabbit
Clonality	Polyclonal
Isotype	IgG
Purification	Affinity purification
Applications	WB,IHC
Species Reactivity	Human,Mouse,Rat
Immunogen Description	Recombinant fusion protein of human ADH1C (NP_000660.1).
Other Names	ADH1C; ADH3; alcohol dehydrogenase 1C
Accession No.	Swiss-Prot#:P00326NCBI Gene ID:126
Uniprot	P00326
GeneID	126;
Calculated MW	45kDa
Formulation	Avoid freeze / thaw cycles. Buffer: PBS with 50% glycerol, pH7.4.
Storage	Store at -20°C

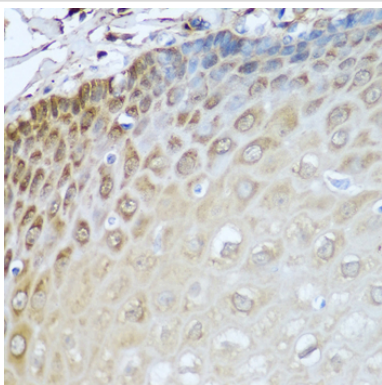
Application Details

WB 1:500 - 1:2000IHC 1:50 - 1:200

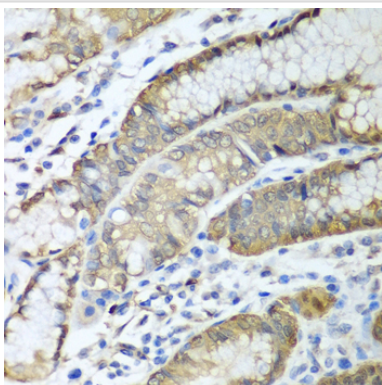
Images



Western blot analysis of extracts of various cell lines, using ADH1C at 1:1000 dilution. Secondary antibody: HRP Goat Anti-Rabbit IgG (H+L) at 1:10000 dilution. Lysates/proteins: 25ug per lane. Blocking buffer: 3% nonfat dry milk in TBST. Detection: ECL Enhanced Kit (RM00021). Exposure time: 10s.



Immunohistochemistry of paraffin-embedded human esophagus using ADH1C at dilution of 1:100 (40x lens).



Immunohistochemistry of paraffin-embedded human stomach using ADH1C at dilution of 1:100 (40x lens).

Background

This gene encodes class I alcohol dehydrogenase, gamma subunit, which is a member of the alcohol dehydrogenase family. Members of this enzyme family metabolize a wide variety of substrates, including ethanol, retinol, other aliphatic alcohols, hydroxysteroids, and lipid peroxidation products. Class I alcohol dehydrogenase, consisting of several homo- and heterodimers of alpha, beta, and gamma subunits, exhibits high activity for ethanol oxidation and plays a major role in ethanol catabolism. Three genes encoding alpha, beta and gamma subunits are tandemly organized in a genomic segment as a gene cluster.

Note: This product is for in vitro research use only