

C5 Polyclonal Antibody

Catalog No: #31439



Package Size: #31439-1 50ul #31439-2 100ul

Orders: [order@signalwayantibody.com](mailto:order@signalwayantibody.com)  
Support: [tech@signalwayantibody.com](mailto:tech@signalwayantibody.com)

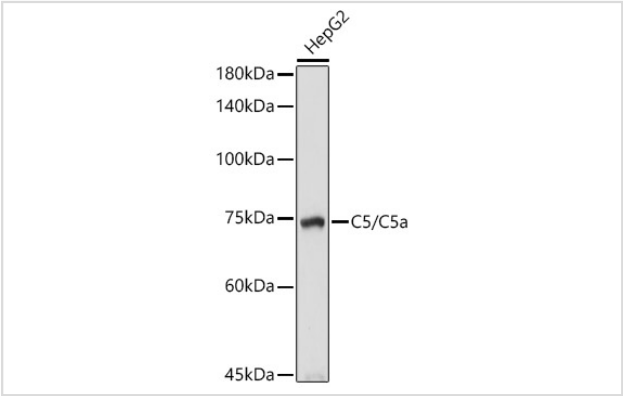
Description

Product Name	C5 Polyclonal Antibody
Host Species	Rabbit
Clonality	Polyclonal
Isotype	IgG
Purification	Affinity purification
Applications	WB,IF
Species Reactivity	Human,Mouse,Rat
Immunogen Description	Recombinant fusion protein of human C5/C5a (NP_001726.2).
Other Names	C5;C5D;C5a;C5b;CPAMD4;ECLZB
Accession No.	Uniprot:P01031GenelD:727
Uniprot	P01031
GenelD	727
Calculated MW	110kDa
SDS-PAGE MW	74KDa/110KDa
Formulation	PBS with 0.02% sodium azide,50% glycerol,pH7.3.
Storage	Store at -20°C. Avoid freeze / thaw cycles.

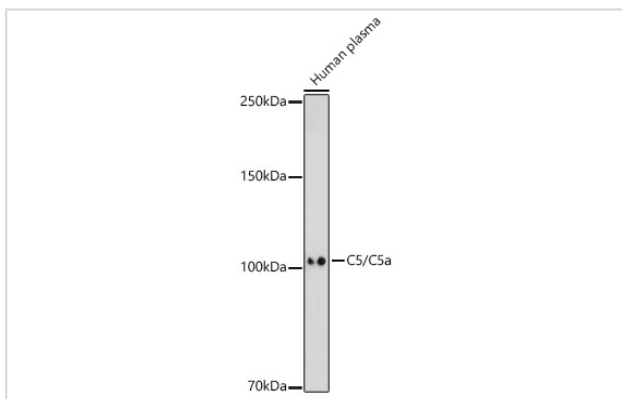
Application Details

WB 1:500 - 1:2000IF 1:50 - 1:100

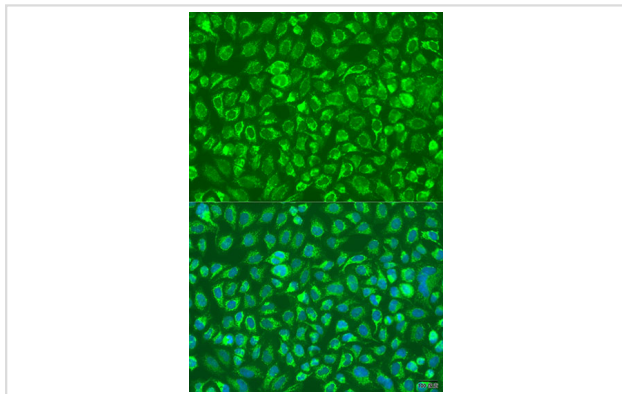
Images



Western blot analysis of extracts of HepG2 cells, using C5/C5a antibody.



Western blot analysis of extracts of Human plasma, using C5/C5a antibody.



Immunofluorescence analysis of U2OS cells using C5/C5a antibody.

## Background

This gene encodes a component of the complement system, a part of the innate immune system that plays an important role in inflammation, host homeostasis, and host defense against pathogens. The encoded preproprotein is proteolytically processed to generate multiple protein products, including the C5 alpha chain, C5 beta chain, C5a anaphylatoxin and C5b. The C5 protein is comprised of the C5 alpha and beta chains, which are linked by a disulfide bridge. Cleavage of the alpha chain by a convertase enzyme results in the formation of the C5a anaphylatoxin, which possesses potent spasmogenic and chemotactic activity, and the C5b macromolecular cleavage product, a subunit of the membrane attack complex (MAC). Mutations in this gene cause complement component 5 deficiency, a disease characterized by recurrent bacterial infections. Alternative splicing results in multiple transcript variants.

Note: This product is for in vitro research use only