

NEU2 Polyclonal Antibody

Catalog No: #31445

Package Size: #31445-1 50ul #31445-2 100ul

Orders: order@signalwayantibody.comSupport: tech@signalwayantibody.com

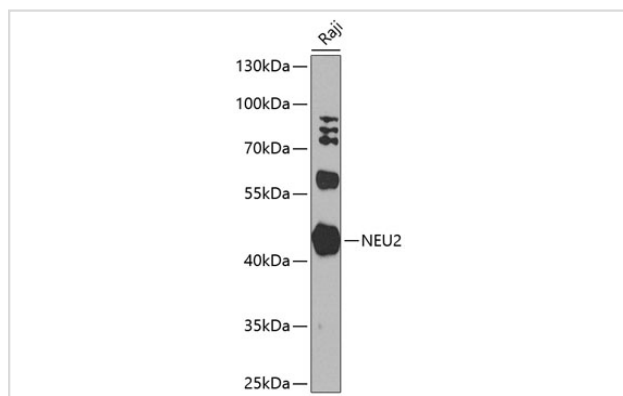
Description

Product Name	NEU2 Polyclonal Antibody
Host Species	Rabbit
Clonality	Polyclonal
Isotype	IgG
Purification	Affinity purification
Applications	WB
Species Reactivity	Human
Immunogen Description	Recombinant fusion protein of human NEU2 (NP_005374.2).
Other Names	NEU2; SIAL2; sialidase-2
Accession No.	Swiss-Prot#:Q9Y3R4NCBI Gene ID:4759
Uniprot	Q9Y3R4
GeneID	4759;
Calculated MW	42kDa
Formulation	Avoid freeze / thaw cycles. Buffer: PBS with 50% glycerol, pH7.4.
Storage	Store at -20°C

Application Details

WB 1:500 - 1:2000

Images



Western blot analysis of extracts of Raji cells, using NEU2 at 1:1000 dilution.

Background

This gene belongs to a family of glycohydrolytic enzymes which remove sialic acid residues from glycoproteins and glycolipids. Expression studies in COS7 cells confirmed that this gene encodes a functional sialidase. Its cytosolic localization was demonstrated by cell fractionation experiments.

Note: This product is for in vitro research use only