

CHMP1B Polyclonal Antibody

Catalog No: #31482



Package Size: #31482-1 50ul #31482-2 100ul

Orders: order@signalwayantibody.com
Support: tech@signalwayantibody.com

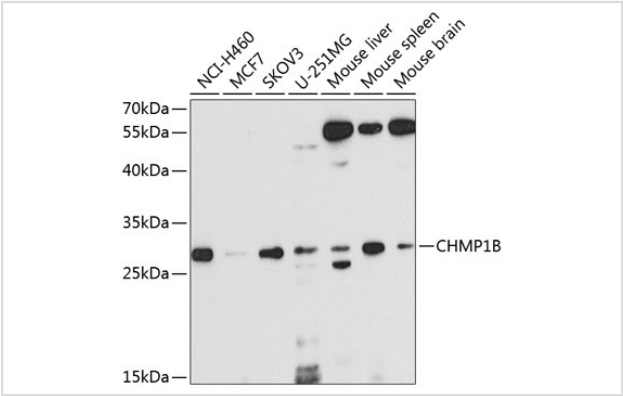
Description

Product Name	CHMP1B Polyclonal Antibody
Host Species	Rabbit
Clonality	Polyclonal
Isotype	IgG
Purification	Affinity purification
Applications	WB
Species Reactivity	Human,Mouse,Rat
Immunogen Description	Recombinant fusion protein of human CHMP1B (NP_065145.2).
Other Names	CHMP1B;C10orf2;C18-ORF2;C18orf2;CHMP1.5;Vps46-2;Vps46B;hVps46-2
Accession No.	Uniprot:Q7LBR1GeneID:57132
Uniprot	Q7LBR1
GeneID	57132
Calculated MW	30kDa
SDS-PAGE MW	30kDa
Formulation	PBS with 0.02% sodium azide,50% glycerol,pH7.3.
Storage	Store at -20°C. Avoid freeze / thaw cycles.

Application Details

WB 1:500 - 1:2000

Images



Western blot analysis of extracts of various cell lines, using CHMP1B antibody.

Background

CHMP1B belongs to the chromatin-modifying protein/charged multivesicular body protein (CHMP) family. These proteins are components of ESCRT-III (endosomal sorting complex required for transport III), a complex involved in degradation of surface receptor proteins and formation of endocytic multivesicular bodies (MVBs). Some CHMPs have both nuclear and cytoplasmic/vesicular distributions, and one such CHMP, CHMP1A

(MIM 164010), is required for both MVB formation and regulation of cell cycle progression (Tsang et al., 2006 [PubMed 16730941]).[supplied by OMIM, Mar 2008]

Note: This product is for in vitro research use only