

# MID2 Polyclonal Antibody

Catalog No: #31511



Package Size: #31511-1 50ul #31511-2 100ul

Orders: [order@signalwayantibody.com](mailto:order@signalwayantibody.com)  
Support: [tech@signalwayantibody.com](mailto:tech@signalwayantibody.com)

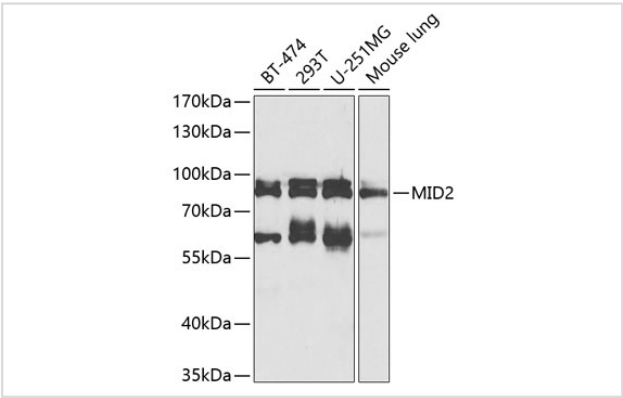
## Description

Product Name	MID2 Polyclonal Antibody
Host Species	Rabbit
Clonality	Polyclonal
Isotype	IgG
Purification	Affinity purification
Applications	WB
Species Reactivity	Human,Mouse
Immunogen Description	Recombinant fusion protein of human MID2 (NP_438112.2).
Other Names	MID2; FXY2; MRX101; RNF60; TRIM1; midline 2
Accession No.	Swiss-Prot#:Q9UJV3NCBI Gene ID:11043
Uniprot	Q9UJV3
GeneID	11043;
Calculated MW	83kDa
Formulation	Avoid freeze / thaw cycles. Buffer: PBS with 50% glycerol, pH7.4.
Storage	Store at -20°C

## Application Details

WB 1:500 - 1:2000

## Images



Western blot analysis of extracts of various cell lines, using MID2 at 1:1000 dilution.

## Background

The protein encoded by this gene is a member of the tripartite motif (TRIM) family. The TRIM motif includes three zinc-binding domains, a RING, a B-box type 1 and a B-box type 2, and a coiled-coil region. The protein localizes to microtubular structures in the cytoplasm. Alternate splicing of this gene results in two transcript variants encoding different isoforms.

---

Note: This product is for in vitro research use only