

PREP Polyclonal Antibody

Catalog No: #31751



Package Size: #31751-1 50ul #31751-2 100ul

Orders: order@signalwayantibody.com
Support: tech@signalwayantibody.com

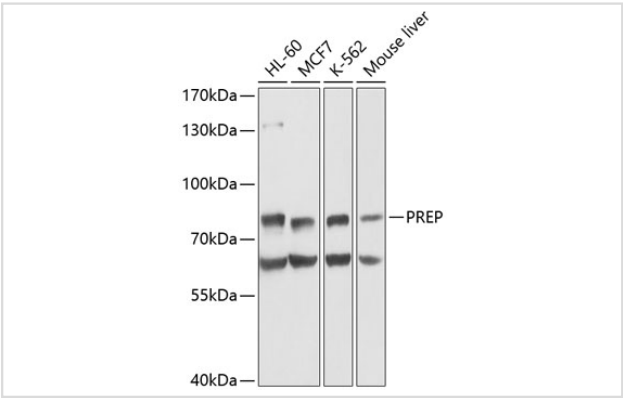
Description

Product Name	PREP Polyclonal Antibody
Host Species	Rabbit
Clonality	Polyclonal
Isotype	IgG
Purification	Affinity purification
Applications	WB
Species Reactivity	Human,Mouse
Immunogen Description	Recombinant fusion protein of human PREP (NP_002717.3).
Other Names	PREP; PE; PEP; prolyl endopeptidase
Accession No.	Swiss-Prot#:P48147NCBI Gene ID:5550
Uniprot	P48147
GeneID	5550;
Calculated MW	81kDa
Formulation	Avoid freeze / thaw cycles. Buffer: PBS with 50% glycerol, pH7.4.
Storage	Store at -20°C

Application Details

WB 1:500 - 1:2000

Images



Western blot analysis of extracts of various cell lines, using PREP at 1:1000 dilution.

Background

The protein encoded by this gene is a cytosolic prolyl endopeptidase that cleaves peptide bonds on the C-terminal side of prolyl residues within peptides that are up to approximately 30 amino acids long. Prolyl endopeptidases have been reported to be involved in the maturation and degradation of peptide hormones and neuropeptides.

Note: This product is for in vitro research use only