

## AR (Acetyl Lys633) Polyclonal Antibody

Catalog No: #HW174

Package Size: #HW174-1 50ul #HW174-2 100ul

Orders: [order@signalwayantibody.com](mailto:order@signalwayantibody.com)Support: [tech@signalwayantibody.com](mailto:tech@signalwayantibody.com)

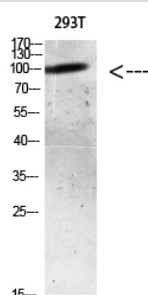
## Description

Product Name	AR (Acetyl Lys633) Polyclonal Antibody
Host Species	Rabbit
Clonality	Polyclonal
Purification	The antibody was affinity-purified from rabbit serum by affinity-chromatography using specific immunogen.
Applications	WB
Species Reactivity	Hu Ms Rt
Specificity	The antibody detects endogenous AR when Acetyl occurs at Lys633(human) 613(mouse/rat)
Immunogen Type	protein
Immunogen Description	Synthetic Acetyl peptide from human protein at AA range: 633
Target Name	AR (Acetyl Lys633)
Other Names	Androgen receptor (Dihydrotestosterone receptor) (Nuclear receptor subfamily 3 group C member 4)
Accession No.	Swiss-Prot:P10275NCBI Gene ID:367
Uniprot	P10275
GeneID	367;
Calculated MW	100 kDa
Concentration	1 mg/ml
Formulation	Liquid in PBS containing 50% glycerol, 0.5% BSA and 0.02% sodium azide.
Storage	Store at -20°C

## Application Details

Western blotting: 1B£B1500-1B£B12000

## Images



Western blot analysis of mouse-lung lysate, antibody was diluted at 500. Secondary antibody was diluted at 1:20000

---

Note: This product is for in vitro research use only