

## Histone H2B (Acetyl Lys21) Polyclonal Antibody

Catalog No: #HW176

Package Size: #HW176-1 50ul #HW176-2 100ul

Orders: [order@signalwayantibody.com](mailto:order@signalwayantibody.com)Support: [tech@signalwayantibody.com](mailto:tech@signalwayantibody.com)

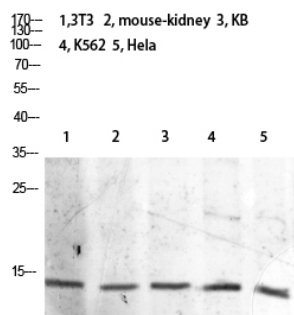
## Description

Product Name	Histone H2B (Acetyl Lys21) Polyclonal Antibody
Host Species	Rabbit
Clonality	Polyclonal
Purification	The antibody was affinity-purified from rabbit serum by affinity-chromatography using specific immunogen.
Applications	WB
Species Reactivity	Hu Ms Rt
Specificity	The antibody detects endogenous Histone H2B when Acetyl occurs at Lys21
Immunogen Type	protein
Immunogen Description	Synthetic Acetyl peptide from human protein at AA range: 21
Target Name	Histone H2B (Acetyl Lys21)
Accession No.	Swiss-Prot:Q96A08/P33778/P62807NCBI Gene ID:255626
Uniprot	Q96A08
GeneID	255626;
Calculated MW	15 kDa
Concentration	1 mg/ml
Formulation	Liquid in PBS containing 50% glycerol, 0.5% BSA and 0.02% sodium azide.
Storage	Store at -20°C

## Application Details

Western blotting: 1B£B'1500-1B£B'12000

## Images



Western blot analysis of 3T3 mouse-kidney KB K562 HeLa lysate, antibody was diluted at 2000. Secondary antibody was diluted at 1:20000

Note: This product is for in vitro research use only