

ACSS1 (Acetyl-K642) Polyclonal Antibody

Catalog No: #HW182



Package Size: #HW182-1 50ul #HW182-2 100ul

Orders: order@signalwayantibody.com
Support: tech@signalwayantibody.com

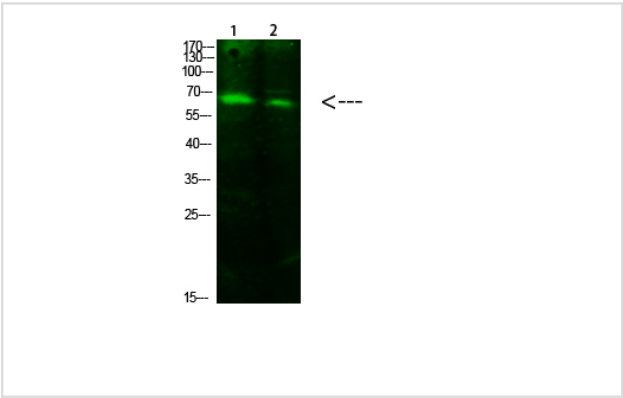
Description

Product Name	ACSS1 (Acetyl-K642) Polyclonal Antibody
Host Species	Rabbit
Clonality	Polyclonal
Purification	The antibody was affinity-purified from rabbit antiserum by affinity-chromatography using epitope-specific immunogen.
Applications	WB
Species Reactivity	Hu Ms Rt
Specificity	This antibody detects endogenous levels of ACSS1 (Acetyl-K642), It doesn't reacte with total protein.
Immunogen Type	protein
Immunogen Description	Synthesized Acetyl peptide derived from human ACSS1. at AA range: K642
Target Name	ACSS1 (Acetyl-K642)
Other Names	Acetyl-coenzyme A synthetase 2-like, mitochondrial (EC 6.2.1.1) (Acetate--CoA ligase 2) (Acetyl-CoA synthetase 2) (AceCS2) (Acyl-CoA synthetase short-chain family member 1)
Accession No.	Swiss-Prot:Q9NUB1NCBI Gene ID:84532
Uniprot	Q9NUB1
GeneID	84532;
Calculated MW	70 kDa
Concentration	1 mg/ml
Formulation	Liquid in PBS containing 50% glycerol, 0.5% BSA and 0.02% sodium azide.
Storage	Store at -20°C

Application Details

Western blotting: 1B£B1500-1B£B12000

Images



Western Blot analysis of 1,293T 2,hela cells using primary antibody diluted at 1:1000(°C overnight). Secondary antibodyB£B1Goat Anti-rabbit IgG IRDye 800(diluted at 1:5000, 25B'£C, 1 hour)

Note: This product is for in vitro research use only