

PARP-1 (Acetyl-K521) Polyclonal Antibody

Catalog No: #HW188



Package Size: #HW188-1 50ul #HW188-2 100ul

Orders: [order@signalwayantibody.com](mailto:order@signalwayantibody.com)  
Support: [tech@signalwayantibody.com](mailto:tech@signalwayantibody.com)

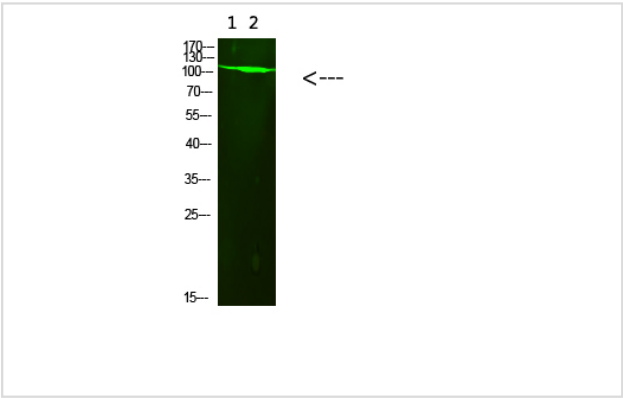
Description

|                       |  |
|-----------------------|--|
| Product Name          | PARP-1 (Acetyl-K521) Polyclonal Antibody   |
| Host Species          | Rabbit   |
| Clonality             | Polyclonal   |
| Purification          | The antibody was affinity-purified from rabbit antiserum by affinity-chromatography using epitope-specific immunogen.  |
| Applications          | WB   |
| Species Reactivity    | Hu Ms Rt   |
| Specificity           | This antibody detects endogenous levels of PARP-1 (Acetyl-K521), It doesn't reacte with total protein.   |
| Immunogen Type        | protein  |
| Immunogen Description | Synthesized Acetyl peptide derived from human PARP-1. at AA range: K521  |
| Target Name           | PARP-1 (Acetyl-K521)   |
| Other Names           | Poly [ADP-ribose] polymerase 1 (PARP-1) (EC 2.4.2.30) (ADP-ribosyltransferase diphtheria toxin-like 1) (ARTD1) (NAD(+) ADP-ribosyltransferase 1) (ADPRT 1) (Poly[ADP-ribose] synthase 1) |
| Accession No.         | Swiss-Prot:P09874NCBI Gene ID:142  |
| Uniprot               | P09874   |
| GeneID                | 142;   |
| Calculated MW         | 113 kDa  |
| Concentration         | 1 mg/ml  |
| Formulation           | Liquid in PBS containing 50% glycerol, 0.5% BSA and 0.02% sodium azide.  |
| Storage               | Store at -20°C   |

Application Details

Western blotting: 1B£B1500-1B£B12000

Images



Western Blot analysis of 1,293t 2,mouse-brain cells using primary antibody diluted at 1:1000(°C overnight). Secondary antibodyB£B1Goat Anti-rabbit IgG IRDye 800( diluted at 1:5000, 25B'Γ£C, 1 hour)

---

Note: This product is for in vitro research use only