

Neurturin Antibody

Catalog No: #24013

Orders: order@signalwayantibody.comSupport: tech@signalwayantibody.com

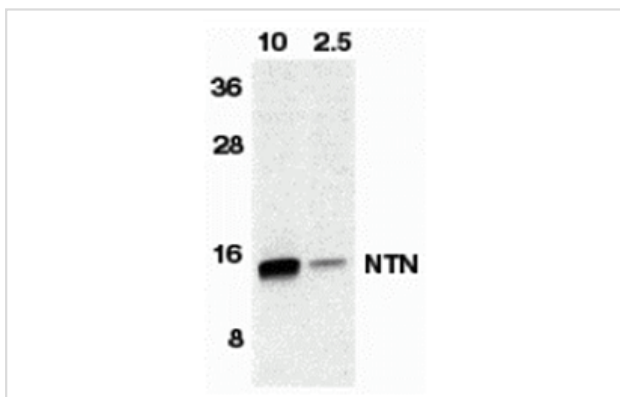
Description

Product Name	Neurturin Antibody
Host Species	Rabbit
Clonality	Polyclonal
Purification	Affinity chromatography purified via peptide column
Applications	ELISA WB IHC
Species Reactivity	Hu
Immunogen Type	Peptide
Immunogen Description	Raised against a peptide corresponding to amino acids 178 to 193 of human neurturin.
Target Name	Neurturin
Accession No.	Swiss-Prot:Q99748Gene ID:4902
Uniprot	Q99748
GeneID	4902;
Concentration	1mg/ml
Formulation	Supplied in PBS containing 0.02% sodium azide.
Storage	Can be stored at -20°C, stable for one year. As with all antibodies care should be taken to avoid repeated freeze thaw cycles. Antibodies should not be exposed to prolonged high temperatures.

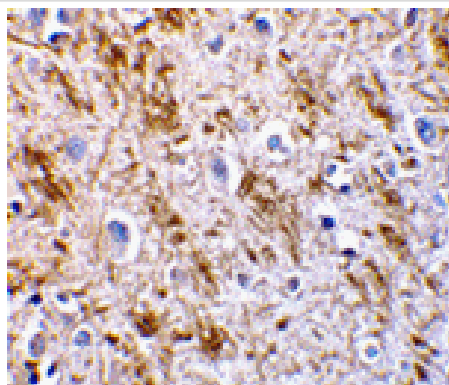
Application Details

Predicted MW: 14 kd

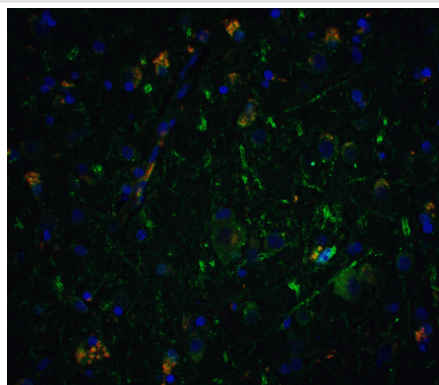
Images



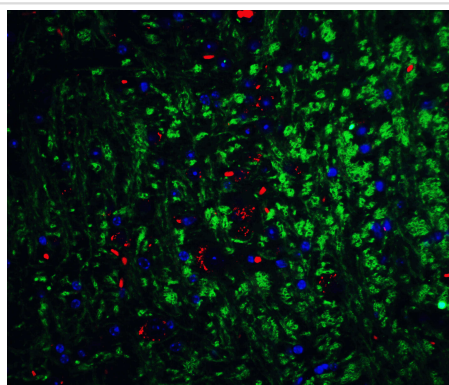
Western blot analysis of NTN in HeLa cell lysate containing 10 or 2.5 ng of full length recombinant NTN with neurturin antibody at 1:500.



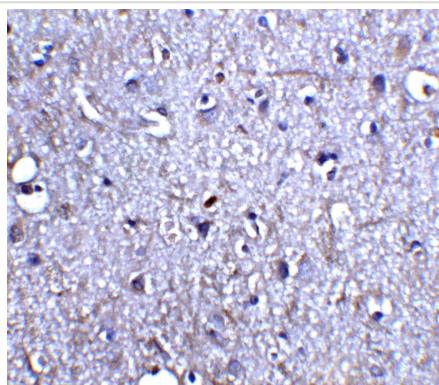
Immunohistochemistry of neurturin in human brain tissue with neurturin antibody at 5 ug/mL.



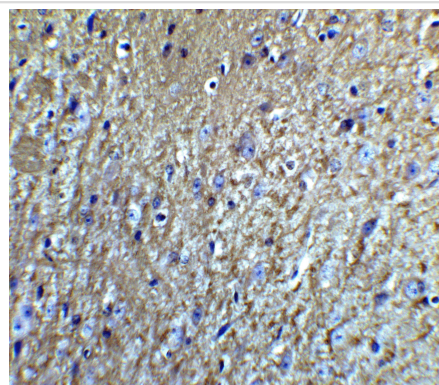
Immunofluorescence of Neurturin in human brain tissue with Neurturin antibody at 5 µg/ml.



Immunofluorescence of Neurturin in mouse brain tissue with Neurturin Antibody at 20 µg/mL.



Immunohistochemistry of Neurturin in human brain tissue with Neurturin antibody at 5 µg/ml.



Immunohistochemistry of Neurturin in mouse brain tissue with Neurturin Antibody at 5 µg/mL.

Background

Glial cell line-derived neurotrophic factor (GDNF) plays key roles in the control of vertebrate neuron survival and differentiation. A novel neurotrophic factor was recently cloned from human and mouse and designated neurturin. Physiological responses to neurturin (NTN) require the presence of receptor tyrosine kinase RET and a novel glycosylphosphatidylinositol linked receptor NTN α . The cDNAs encoding NTN α from human, rat, chicken, and mouse have been cloned recently and termed GDNFR β , Ret ligand 2 (RETL2) or TGF-beta-related neurotrophic factor receptor 2 (TrnR2) and nominated as GFR α -2 recently. NTN binds to and forms a complex with GFR α -2 and the Ret PTK and activates the RET receptor tyrosine kinase pathway. Both NTN and GDNF can activate the MAP kinase and phosphatidylinositol 3-kinase pathways and play a critical role in the development of many neuronal populations. Neurturin and GDNF define a new family of neurotrophic factors.

Note: This product is for in vitro research use only