

## Ret Polyclonal Antibody

Catalog No: #46740

Package Size: #46740-1 50ul #46740-2 100ul

Orders: order@signalwayantibody.com

Support: tech@signalwayantibody.com

## Description

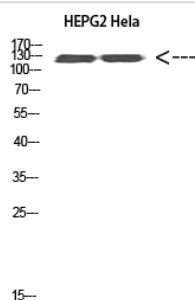
Product Name	Ret Polyclonal Antibody
Host Species	Rabbit
Clonality	Polyclonal
Purification	The antibody was affinity-purified from rabbit antiserum by affinity-chromatography using epitope-specific immunogen.
Applications	WB IHC
Species Reactivity	Hu
Specificity	Ret Polyclonal Antibody detects endogenous levels of Ret
Immunogen Type	protein
Immunogen Description	Synthesized peptide derived from Ret at AA range: 191-240
Target Name	Ret
Other Names	Proto-oncogene tyrosine-protein kinase receptor Ret (EC 2.7.10.1) (Cadherin family member 12) (Proto-oncogene c-Ret) [Cleaved into: Soluble RET kinase fragment; Extracellular cell-membrane anchored RET cadherin 120 kDa fragment]
Accession No.	Swiss-Prot:P07949NCBI Gene ID:5979
Uniprot	P07949
GeneID	5979;
Calculated MW	124 kDa
Concentration	1 mg/ml
Formulation	Liquid in PBS containing 50% glycerol, 0.5% BSA and 0.02% sodium azide.
Storage	Store at -20°C

## Application Details

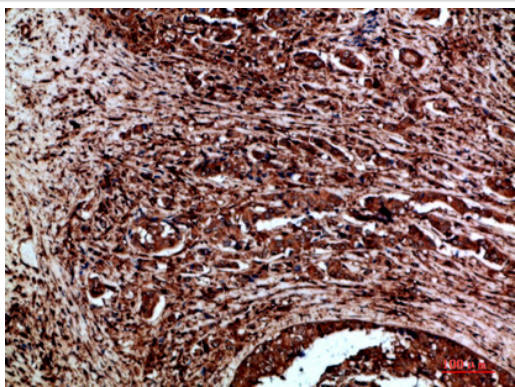
Western blotting: 1B£B1500-1B£B12000

Immunohistochemistry: IHC: 1:100-1:300

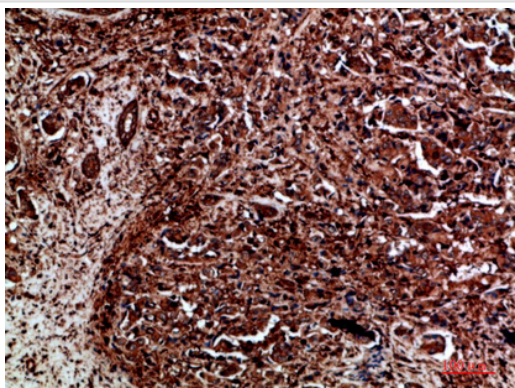
## Images



Western Blot analysis of HEPG2 Hela cells using Ret Polyclonal Antibody diluted at 1:1000. Secondary antibody was diluted at 1:20000



Immunohistochemical analysis of paraffin-embedded human-breast-cancer, antibody was diluted at 1:200



Immunohistochemical analysis of paraffin-embedded human-breast-cancer, antibody was diluted at 1:200

---

Note: This product is for in vitro research use only