

## MBL-C Polyclonal Antibody

Catalog No: #46754

Package Size: #46754-1 50ul #46754-2 100ul

Orders: order@signalwayantibody.com

Support: tech@signalwayantibody.com

## Description

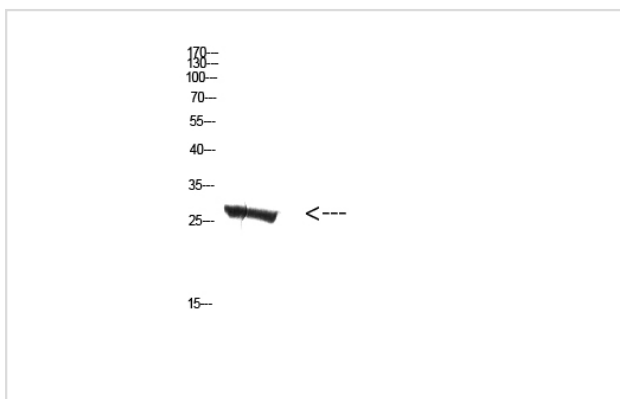
Product Name	MBL-C Polyclonal Antibody
Host Species	Rabbit
Clonality	Polyclonal
Purification	The antibody was affinity-purified from rabbit serum by affinity-chromatography using specific immunogen.
Applications	WB IHC
Species Reactivity	Hu Ms
Specificity	The antibody detects endogenous MBL-C protein
Immunogen Type	protein
Immunogen Description	Synthetic peptide from human protein at AA range: 21-70
Target Name	MBL-C
Other Names	MBL2 COLEC1 MBL
Accession No.	Swiss-Prot:P11226NCBI Gene ID:4153
Uniprot	P11226
GeneID	4153;
Calculated MW	27 kDa
Concentration	1 mg/ml
Formulation	Liquid in PBS containing 50% glycerol, 0.5% BSA and 0.02% sodium azide.
Storage	Store at -20°C

## Application Details

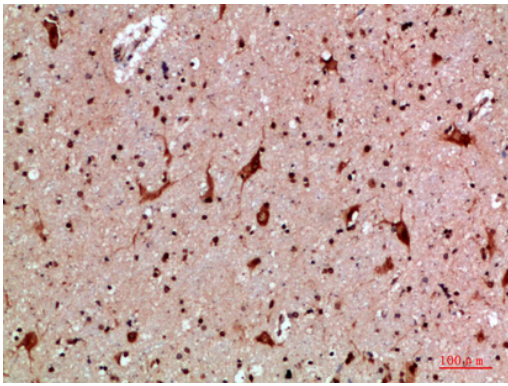
Western blotting: 1B£B1500-1B£B110000

Immunohistochemistry: IHC: 1:100-1:300

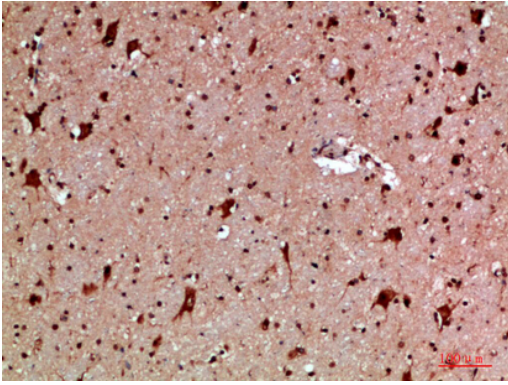
## Images



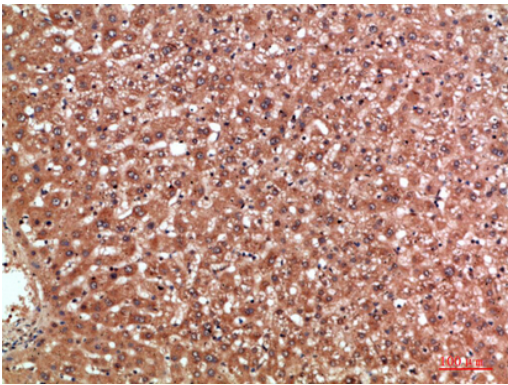
Western Blot analysis of mouse-kidney cells using Antibody diluted at 500. Secondary antibody was diluted at 1:20000



Immunohistochemical analysis of paraffin-embedded human-brain, antibody was diluted at 1:200



Immunohistochemical analysis of paraffin-embedded human-brain, antibody was diluted at 1:200



Immunohistochemical analysis of paraffin-embedded human-liver, antibody was diluted at 1:200

---

Note: This product is for in vitro research use only