

# COL17A1 Polyclonal Antibody

Catalog No: #46757



Package Size: #46757-1 50ul #46757-2 100ul

Orders: [order@signalwayantibody.com](mailto:order@signalwayantibody.com)  
Support: [tech@signalwayantibody.com](mailto:tech@signalwayantibody.com)

## Description

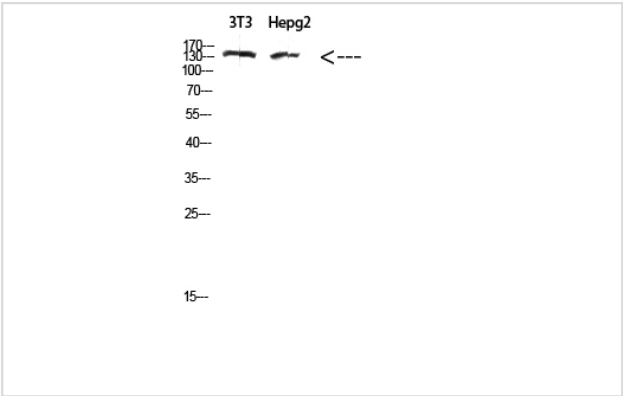
Product Name	COL17A1 Polyclonal Antibody
Host Species	Rabbit
Clonality	Polyclonal
Purification	The antibody was affinity-purified from rabbit serum by affinity-chromatography using specific immunogen.
Applications	WB IHC
Species Reactivity	Hu
Specificity	The antibody detects endogenous COL17A1 protein
Immunogen Type	protein
Immunogen Description	Synthetic peptide from human protein at AA range: 481-530
Target Name	COL17A1
Other Names	COL17A1 BP180 BPAG2
Accession No.	Swiss-Prot:Q9UMD9NCBI Gene ID:1308
Uniprot	Q9UMD9
GeneID	1308;
Calculated MW	150 kDa
Concentration	1 mg/ml
Formulation	Liquid in PBS containing 50% glycerol, 0.5% BSA and 0.02% sodium azide.
Storage	Store at -20°C

## Application Details

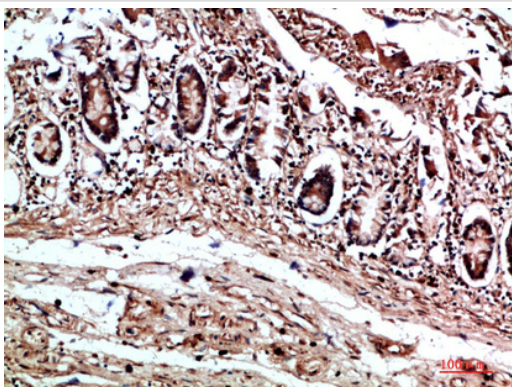
Western blotting: 1B£B1500-1B£B110000

Immunohistochemistry: IHC: 1:100-1:300

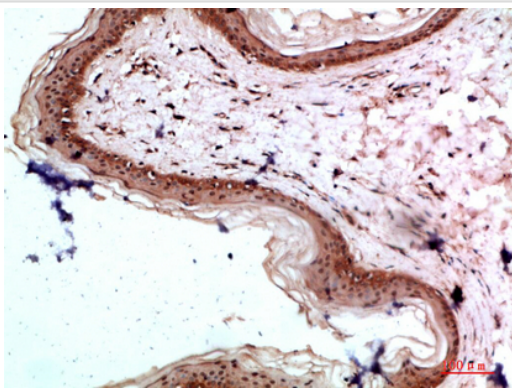
## Images



Western Blot analysis of 3T3, hepg2 cells using Antibody diluted at 500. Secondary antibody was diluted at 1:20000



Immunohistochemical analysis of paraffin-embedded human-colon, antibody was diluted at 1:200



Immunohistochemical analysis of paraffin-embedded human-skin, antibody was diluted at 1:200

---

Note: This product is for in vitro research use only