

## Mox1 Polyclonal Antibody

Catalog No: #46761

Package Size: #46761-1 50ul #46761-2 100ul

Orders: order@signalwayantibody.com

Support: tech@signalwayantibody.com

## Description

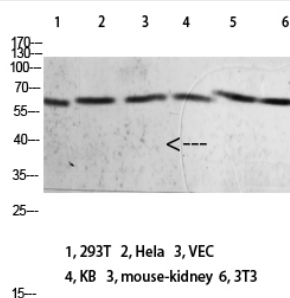
Product Name	Mox1 Polyclonal Antibody
Host Species	Rabbit
Clonality	Polyclonal
Purification	The antibody was affinity-purified from rabbit serum by affinity-chromatography using specific immunogen.
Applications	WB IHC
Species Reactivity	Hu Ms Rt
Specificity	The antibody detects endogenous Mox1
Immunogen Type	protein
Immunogen Description	Synthetic peptide from human protein at AA range: 210-260
Target Name	Mox1
Other Names	NADPH oxidase 1 (NOX-1) (EC 1.-.-.-) (Mitogenic oxidase 1) (MOX-1) (NADH/NADPH mitogenic oxidase subunit P65-MOX) (NOH-1)
Accession No.	Swiss-Prot:Q9Y5S8NCBI Gene ID:27035
Uniprot	Q9Y5S8
GeneID	27035;
Calculated MW	65 kDa
Concentration	1 mg/ml
Formulation	Liquid in PBS containing 50% glycerol, 0.5% BSA and 0.02% sodium azide.
Storage	Store at -20°C

## Application Details

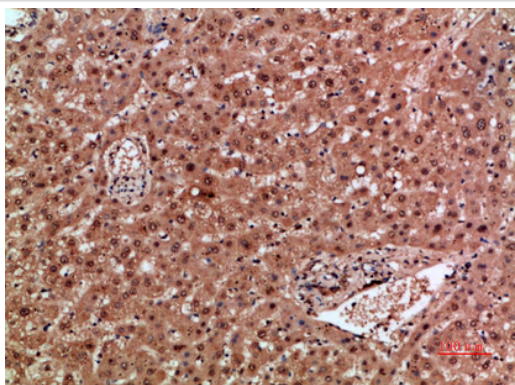
Western blotting: 1B£B'1500-1B£B'12000

Immunohistochemistry: IHC 1:50-300

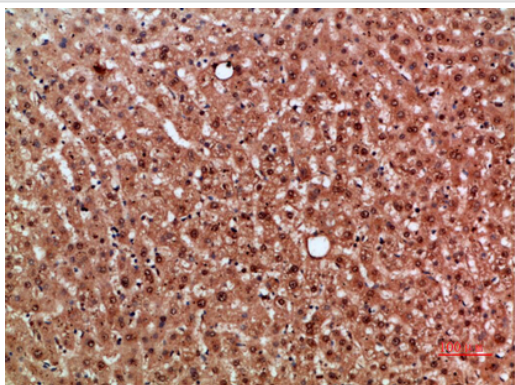
## Images



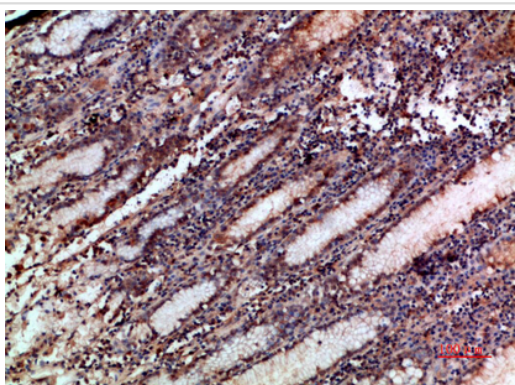
Western blot analysis of 293T HeLa VEC KB mouse-kidney 3T3 lysate, antibody was diluted at 2000. Secondary antibody was diluted at 1:20000



Immunohistochemical analysis of paraffin-embedded human-liver, antibody was diluted at 1:200



Immunohistochemical analysis of paraffin-embedded human-liver, antibody was diluted at 1:200



Immunohistochemical analysis of paraffin-embedded human-stomach, antibody was diluted at 1:200

Note: This product is for in vitro research use only