

Endoglin Polyclonal Antibody

Catalog No: #46768

Package Size: #46768-1 50ul #46768-2 100ul

Orders: order@signalwayantibody.comSupport: tech@signalwayantibody.com

Description

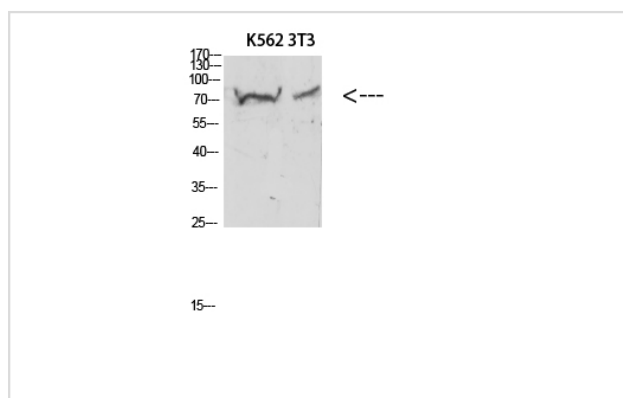
Product Name	Endoglin Polyclonal Antibody
Host Species	Rabbit
Clonality	Polyclonal
Purification	The antibody was affinity-purified from rabbit serum by affinity-chromatography using specific immunogen.
Applications	WB IHC
Species Reactivity	Hu
Specificity	The antibody detects endogenous Endoglin
Immunogen Type	protein
Immunogen Description	Synthetic peptide from human protein at AA range: 370-430
Target Name	Endoglin
Other Names	Endoglin (CD antigen CD105)
Accession No.	Swiss-Prot:P17813NCBI Gene ID:2022
Uniprot	P17813
GeneID	2022;
Calculated MW	70 kDa
Concentration	1 mg/ml
Formulation	Liquid in PBS containing 50% glycerol, 0.5% BSA and 0.02% sodium azide.
Storage	Store at -20°C

Application Details

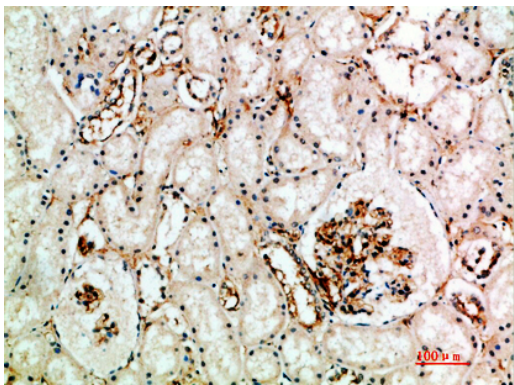
Western blotting: 1B£B1500-1B£B12000

Immunohistochemistry: IHC 1:50-300

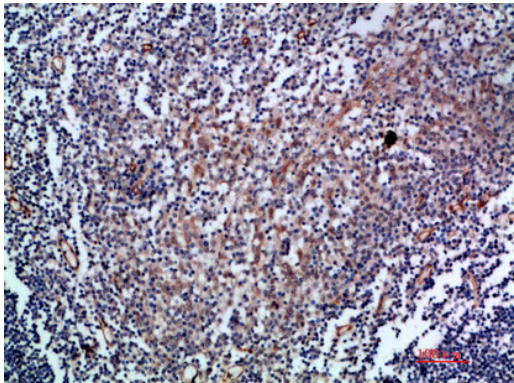
Images



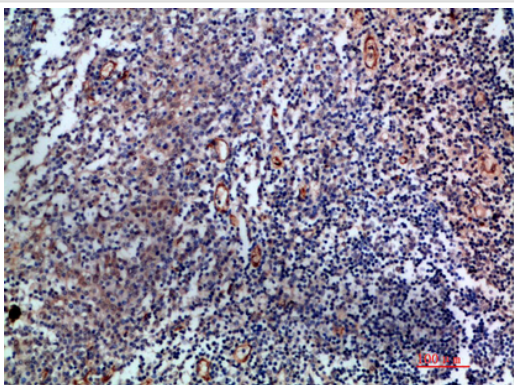
Western blot analysis of 3T3 KB K562 Hela 293T lysate, antibody was diluted at 500. Secondary antibody was diluted at 1:20000



Immunohistochemical analysis of paraffin-embedded human-kidney, antibody was diluted at 1:200



Immunohistochemical analysis of paraffin-embedded human-tonsil, antibody was diluted at 1:200



Immunohistochemical analysis of paraffin-embedded human-tonsil, antibody was diluted at 1:200

Note: This product is for in vitro research use only