

## TACE Antibody

Catalog No: #24018

Orders: [order@signalwayantibody.com](mailto:order@signalwayantibody.com)Support: [tech@signalwayantibody.com](mailto:tech@signalwayantibody.com)

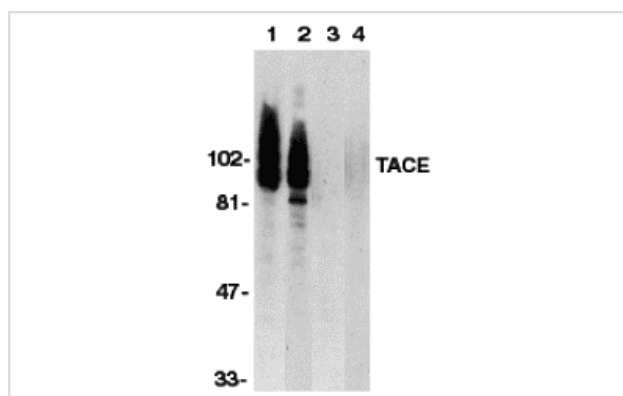
## Description

Product Name	TACE Antibody
Host Species	Rabbit
Clonality	Polyclonal
Purification	Affinity chromatography purified via peptide column
Applications	ELISA WB ICC IF FC
Species Reactivity	Hu Ms Rt
Immunogen Type	Peptide
Immunogen Description	Raised against a peptide corresponding to amino acids near the carboxy terminus of human TACE. This sequence differs from those of mouse and rat TACE by one amino acid.
Target Name	TACE
Other Names	adam17
Accession No.	Swiss-Prot:P78536Gene ID:6868
Uniprot	P78536
GeneID	6868;
Concentration	1mg/ml
Formulation	Supplied in PBS containing 0.02% sodium azide.
Storage	Can be stored at -20°C, stable for one year. As with all antibodies care should be taken to avoid repeated freeze thaw cycles. Antibodies should not be exposed to prolonged high temperatures.

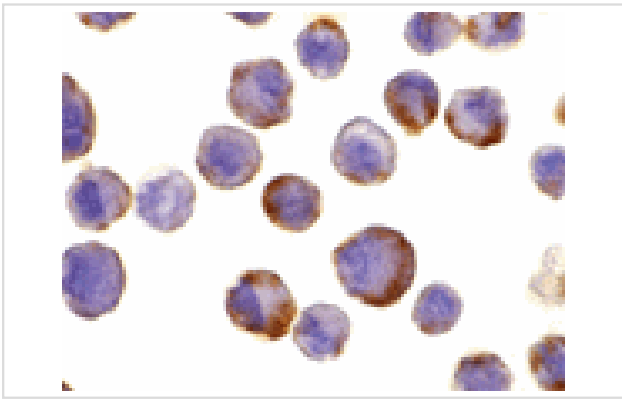
## Application Details

Predicted MW: 93 kd

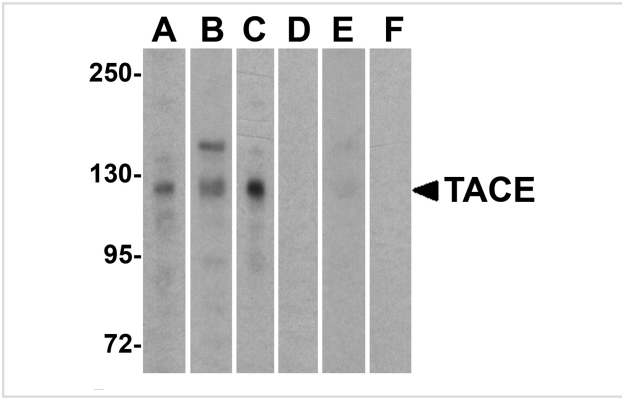
## Images



Western blot analysis of TACE in HeLa and Jurkat whole cell lysate in the absence or presence of blocking peptide (Cat. No. 1131P) with TACE antibody at 1:500 dilution.



Immunocytochemistry of TACE in HeLa cells with TACE antibody at 10 ug/mL.



Western blot analysis of TACE in HeLa (A, D), Jurkat (B, E) and Raji (C,F) cell lysate in (A-C) the absence or (D-F) the presence of blocking peptide with TACE antibody at 0.5  $\mu$ g/mL.

## Background

Tumor-necrosis factor- $\alpha$  is a proinflammatory cytokine and contributes to a variety of inflammatory disease responses and programmed cell death. TNF- $\alpha$  is synthesized as a 26K type II membrane-bound precursor that is cleaved by a convertase to generate secreted 17K mature TNF- $\alpha$ . TNF- $\alpha$  converting enzyme (TACE) protein was recently purified and the human and mouse TACE cDNAs were cloned by several groups separately. TACE is a membrane-bound metalloprotease-disintegrin in the family of mammalian ADAM (for a disintegrin and metalloprotease). TACE also processes other cell surface proteins, including TNF receptor, TGF $\alpha$ , the L-selectin adhesion molecule, and  $\alpha$ -cleavage of amyloid protein precursor (APP). TACE mRNA is expressed in a variety of human and murine tissues. TACE was selected as one of the few targets in cytokine activation by the Eighth International Conference of the Inflammation Research Association.

Note: This product is for in vitro research use only