

DAAM1 Polyclonal Antibody

Catalog No: #46785

Package Size: #46785-1 50ul #46785-2 100ul

Orders: order@signalwayantibody.comSupport: tech@signalwayantibody.com

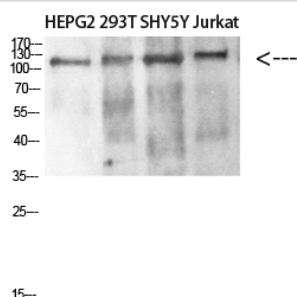
Description

Product Name	DAAM1 Polyclonal Antibody
Host Species	Rabbit
Clonality	Polyclonal
Purification	The antibody was affinity-purified from rabbit serum by affinity-chromatography using specific immunogen.
Applications	WB
Species Reactivity	Hu Ms
Specificity	The antibody detects endogenous DAAM1
Immunogen Type	protein
Immunogen Description	Synthetic peptide from human protein at AA range: 400-500
Target Name	DAAM1
Other Names	Disheveled-associated activator of morphogenesis 1
Accession No.	Swiss-Prot:Q9Y4D1NCBI Gene ID:23002
Uniprot	Q9Y4D1
GeneID	23002;
Calculated MW	123 kDa
Concentration	1 mg/ml
Formulation	Liquid in PBS containing 50% glycerol, 0.5% BSA and 0.02% sodium azide.
Storage	Store at -20°C

Application Details

Western blotting: 1B£B1500-1B£B12000

Images



Western blot analysis of SW480 MCF7 lysate, antibody was diluted at 500. Secondary antibody was diluted at 1:20000

Note: This product is for in vitro research use only