

## INSL3 Polyclonal Antibody

Catalog No: #46793

Package Size: #46793-1 50ul #46793-2 100ul

Orders: [order@signalwayantibody.com](mailto:order@signalwayantibody.com)Support: [tech@signalwayantibody.com](mailto:tech@signalwayantibody.com)

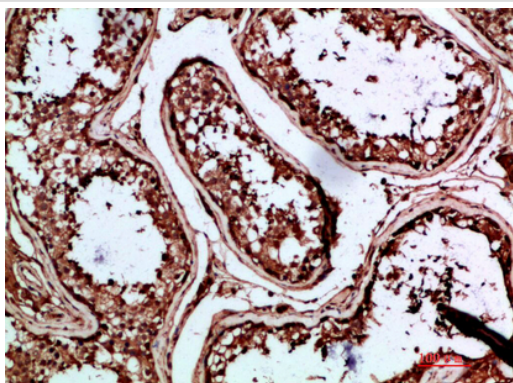
## Description

Product Name	INSL3 Polyclonal Antibody
Host Species	Rabbit
Clonality	Polyclonal
Purification	The antibody was affinity-purified from rabbit serum by affinity-chromatography using specific immunogen.
Applications	IHC
Species Reactivity	Hu
Specificity	The antibody detects endogenous INSL3
Immunogen Type	protein
Immunogen Description	Synthetic peptide from human protein at AA range: 10-50
Target Name	INSL3
Other Names	Insulin-like 3 (Leydig insulin-like peptide) (Ley-I-L) (Relaxin-like factor) [Cleaved into: Insulin-like 3 B chain; Insulin-like 3 A chain]
Accession No.	Swiss-Prot:P51460NCBI Gene ID:3640
Uniprot	P51460
GeneID	3640;
Concentration	1 mg/ml
Formulation	Liquid in PBS containing 50% glycerol, 0.5% BSA and 0.02% sodium azide.
Storage	Store at -20°C

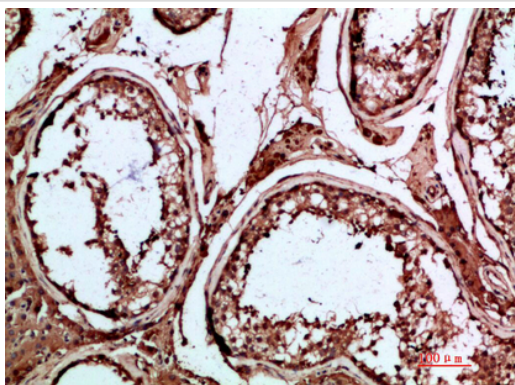
## Application Details

Immunohistochemistry: IHC 1:50-300

## Images



Immunohistochemical analysis of paraffin-embedded human-testis, antibody was diluted at 1:200



Immunohistochemical analysis of paraffin-embedded human-testis, antibody was diluted at 1:200

---

Note: This product is for in vitro research use only