

## CIS Polyclonal Antibody

Catalog No: #46803

Package Size: #46803-1 50ul #46803-2 100ul

Orders: [order@signalwayantibody.com](mailto:order@signalwayantibody.com)Support: [tech@signalwayantibody.com](mailto:tech@signalwayantibody.com)

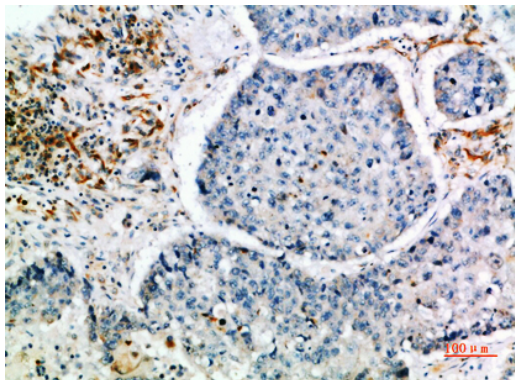
## Description

Product Name	CIS Polyclonal Antibody
Host Species	Rabbit
Clonality	Polyclonal
Purification	The antibody was affinity-purified from rabbit serum by affinity-chromatography using specific immunogen.
Applications	IHC
Species Reactivity	Hu Ms Rt
Specificity	The antibody detects endogenous CIS
Immunogen Type	protein
Immunogen Description	Synthetic peptide from human protein at AA range: 30-90
Target Name	CIS
Other Names	Cytokine-inducible SH2-containing protein (CIS) (CIS-1) (Protein G18) (Suppressor of cytokine signaling) (SOCS)
Accession No.	Swiss-Prot:Q9NSE2NCBI Gene ID:1154
Uniprot	Q9NSE2
GeneID	1154;
Concentration	1 mg/ml
Formulation	Liquid in PBS containing 50% glycerol, 0.5% BSA and 0.02% sodium azide.
Storage	Store at -20°C

## Application Details

Immunohistochemistry: IHC 1:50-300

## Images



Immunohistochemical analysis of paraffin-embedded human-lung-cancer, antibody was diluted at 1:200

---

Note: This product is for in vitro research use only