

## CCL14 Polyclonal Antibody

Catalog No: #46832

Package Size: #46832-1 50ul #46832-2 100ul

Orders: [order@signalwayantibody.com](mailto:order@signalwayantibody.com)Support: [tech@signalwayantibody.com](mailto:tech@signalwayantibody.com)

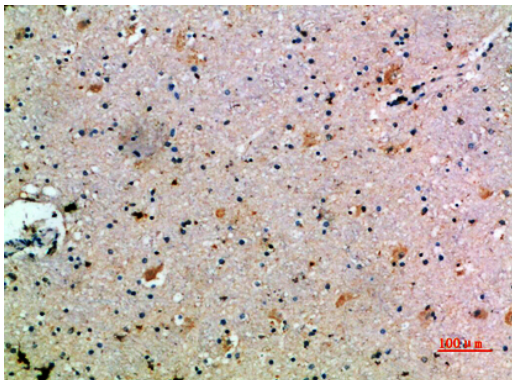
## Description

Product Name	CCL14 Polyclonal Antibody
Host Species	Rabbit
Clonality	Polyclonal
Purification	The antibody was affinity-purified from rabbit serum by affinity-chromatography using specific immunogen.
Applications	IHC
Species Reactivity	Hu
Specificity	The antibody detects endogenous CCL14
Immunogen Type	protein
Immunogen Description	Synthetic peptide from human protein at AA range: 44-93
Target Name	CCL14
Other Names	C-C motif chemokine 14 (Chemokine CC-1/CC-3) (HCC-1/HCC-3) (HCC-1(1-74)) (NCC-2) (Small-inducible cytokine A14) [Cleaved into: HCC-1(3-74); HCC-1(4-74); HCC-1(9-74)]
Accession No.	Swiss-Prot:Q16627NCBI Gene ID:6358
Uniprot	Q16627
GeneID	6358;
Concentration	1 mg/ml
Formulation	Liquid in PBS containing 50% glycerol, 0.5% BSA and 0.02% sodium azide.
Storage	Store at -20°C

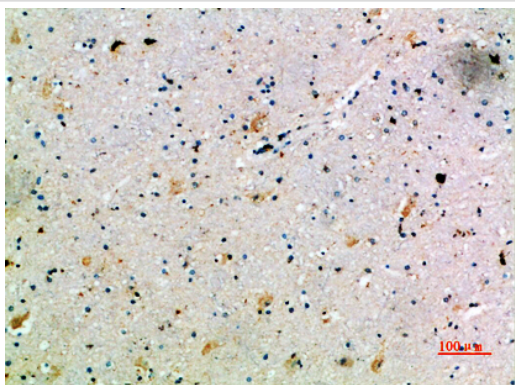
## Application Details

Immunohistochemistry: IHC 1:50-300

## Images



Immunohistochemical analysis of paraffin-embedded human-brain, antibody was diluted at 1:200



Immunohistochemical analysis of paraffin-embedded human-brain, antibody was diluted at 1:200

---

Note: This product is for in vitro research use only