

SDF-1 Polyclonal Antibody

Catalog No: #46845

Package Size: #46845-1 50ul #46845-2 100ul

Orders: order@signalwayantibody.comSupport: tech@signalwayantibody.com

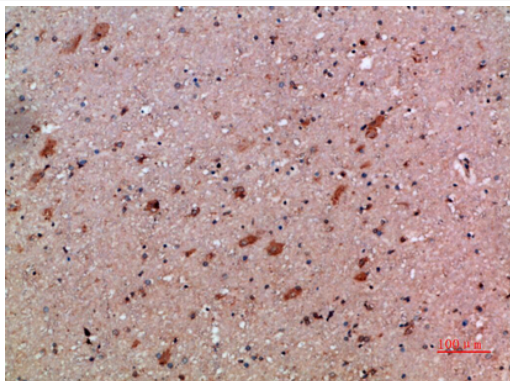
Description

Product Name	SDF-1 Polyclonal Antibody
Host Species	Rabbit
Clonality	Polyclonal
Purification	The antibody was affinity-purified from rabbit serum by affinity-chromatography using specific immunogen.
Applications	IHC
Species Reactivity	Hu Ms Rt
Specificity	The antibody detects endogenous SDF-1
Immunogen Type	protein
Immunogen Description	Synthetic peptide from human protein at AA range: 31-80
Target Name	SDF-1
Other Names	Stromal cell-derived factor 1 (SDF-1) (hSDF-1) (C-X-C motif chemokine 12) (Intercrine reduced in hepatomas) (IRH) (hIRH) (Pre-B cell growth-stimulating factor) (PBSF) [Cleaved into: SDF-1-beta(3-72); SDF-1-alpha(3-67)]
Accession No.	Swiss-Prot:P48061NCBI Gene ID:6387
Uniprot	P48061
GeneID	6387;
Concentration	1 mg/ml
Formulation	Liquid in PBS containing 50% glycerol, 0.5% BSA and 0.02% sodium azide.
Storage	Store at -20°C

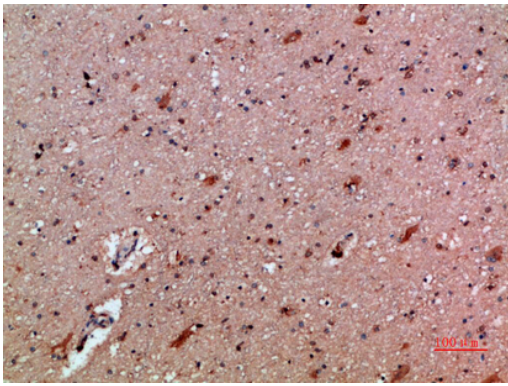
Application Details

Immunohistochemistry: IHC 1:50-300

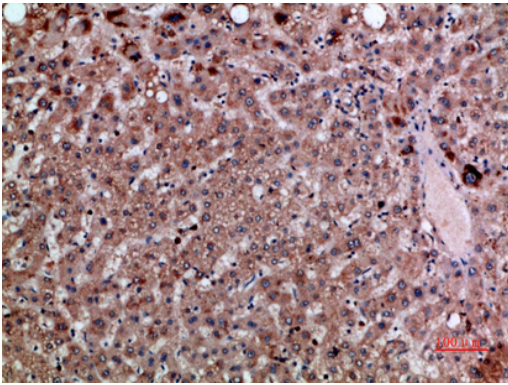
Images



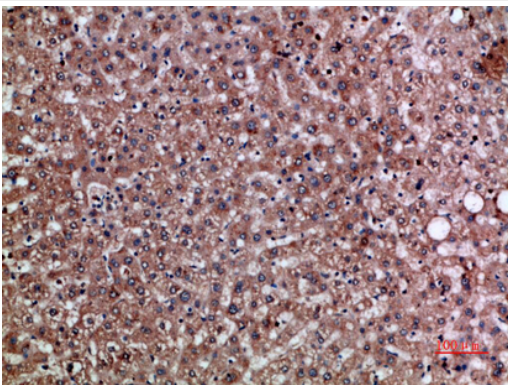
Immunohistochemical analysis of paraffin-embedded human-brain, antibody was diluted at 1:200



Immunohistochemical analysis of paraffin-embedded human-brain, antibody was diluted at 1:200



Immunohistochemical analysis of paraffin-embedded human-liver, antibody was diluted at 1:200



Immunohistochemical analysis of paraffin-embedded human-liver, antibody was diluted at 1:200

Note: This product is for in vitro research use only