

Cardiotrophin-1 Polyclonal Antibody

Catalog No: #46890



Package Size: #46890-1 50ul #46890-2 100ul

Orders: order@signalwayantibody.com
Support: tech@signalwayantibody.com

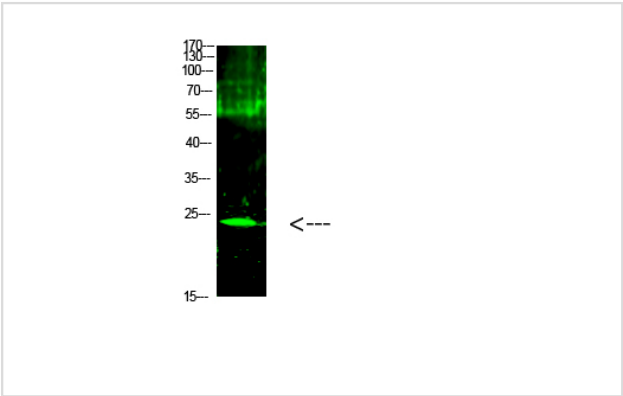
Description

Product Name	Cardiotrophin-1 Polyclonal Antibody
Host Species	Rabbit
Clonality	Polyclonal
Purification	The antibody was affinity-purified from rabbit antiserum by affinity-chromatography using epitope-specific immunogen.
Applications	WB
Species Reactivity	Hu Ms Rt
Specificity	This antibody detects endogenous levels of Cardiotrophin-1
Immunogen Type	protein
Immunogen Description	Synthesized peptide derived from human Cardiotrophin-1. at AA range: 151-200
Target Name	Cardiotrophin-1
Other Names	Cardiotrophin-1 (CT-1)
Accession No.	Swiss-Prot:Q16619NCBI Gene ID:1489
Uniprot	Q16619
GeneID	1489;
Calculated MW	21 kDa
Concentration	1 mg/ml
Formulation	Liquid in PBS containing 50% glycerol, 0.5% BSA and 0.02% sodium azide.
Storage	Store at -20°C

Application Details

Western blotting: 1B£B'1500-1B£B'12000

Images



Western Blot analysis of 1,mouse-kidney cells using primary antibody diluted at 1:1000(°C overnight). Secondary antibodyB£B'Goat Anti-rabbit IgG IRDye 800(diluted at 1:5000, 25B'£C, 1 hour)

Note: This product is for in vitro research use only