

## NUT Polyclonal Antibody

Catalog No: #46891

Package Size: #46891-1 50ul #46891-2 100ul

Orders: [order@signalwayantibody.com](mailto:order@signalwayantibody.com)Support: [tech@signalwayantibody.com](mailto:tech@signalwayantibody.com)

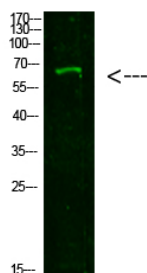
## Description

Product Name	NUT Polyclonal Antibody
Host Species	Rabbit
Clonality	Polyclonal
Purification	The antibody was affinity-purified from rabbit antiserum by affinity-chromatography using epitope-specific immunogen.
Applications	WB
Species Reactivity	Hu
Specificity	This antibody detects endogenous levels of NUT
Immunogen Type	protein
Immunogen Description	Synthesized peptide derived from human NUT. at AA range: 1082-1131
Target Name	NUT
Other Names	Protein NUT (Nuclear protein in testis)
Accession No.	Swiss-Prot:Q86Y26NCBI Gene ID:256646
Uniprot	Q86Y26
GeneID	256646;
Calculated MW	120 kDa
Concentration	1 mg/ml
Formulation	Liquid in PBS containing 50% glycerol, 0.5% BSA and 0.02% sodium azide.
Storage	Store at -20°C

## Application Details

Western blotting: 1B£B'1500-1B£B'12000

## Images



Western Blot analysis of 293T cells using primary antibody diluted at 1:1000(°C overnight). Secondary antibodyB£B'1Goat Anti-rabbit IgG IRDye 800( diluted at 1:5000, 25B'1°C, 1 hour)

---

Note: This product is for in vitro research use only