

## ACD Antibody

Catalog No: #46303

Orders: [order@signalwayantibody.com](mailto:order@signalwayantibody.com)Support: [tech@signalwayantibody.com](mailto:tech@signalwayantibody.com)

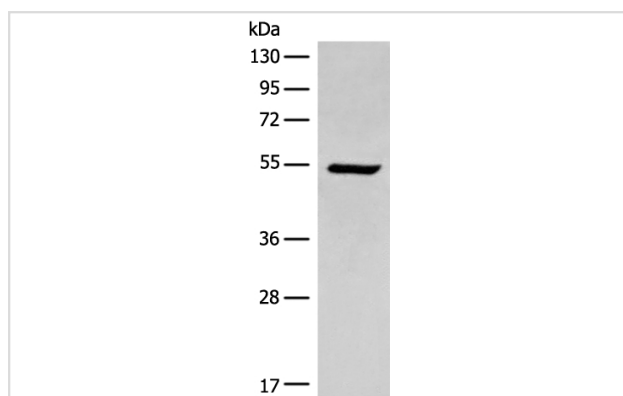
## Description

Product Name	ACD Antibody
Host Species	Rabbit
Clonality	Polyclonal
Purification	Antigen affinity purification
Applications	WB
Species Reactivity	Hu Rt
Specificity	The antibody detects endogenous levels of total ACD protein.
Immunogen Type	peptide
Immunogen Description	Synthetic peptide corresponding to internal residues of human ACD
Target Name	ACD
Other Names	PIP1; PTP1; TPP1; TINT1
Accession No.	Swiss-Prot:Q96AP0NCBI Gene ID:65057NCBI Protein:NP_001075955
Uniprot	Q96AP0
GeneID	65057;
Calculated MW	58 kDa
Concentration	1.3mg/ml
Formulation	Rabbit IgG in pH7.4 PBS, 0.05% NaN <sub>3</sub> , 40% Glycerol.
Storage	Store at -20°C

## Application Details

Western blotting: 1:500-1:2000

## Images



Gel: 8%SDS-PAGE  
 lysate: 40 B<sub>1</sub> g, Lane: HEPG2 cell lysate,  
 Primary antibody: 46303B<sub>1</sub>B<sub>1</sub>ACD Antibody) at dilution 1/400  
 Secondary antibody: Goat anti rabbit IgG at 1/8000 dilution,  
 Exposure time: 60 seconds

## Background

This gene encodes a protein that is involved in telomere function. This protein is one of six core proteins in the telosome/shelterin telomeric complex, which functions to maintain telomere length and to protect telomere ends. Through its interaction with other components, this protein plays a key role

in the assembly and stabilization of this complex, and it mediates the access of telomerase to the telomere. Multiple transcript variants encoding different isoforms have been found for this gene. This gene, which is also referred to as TPP1, is distinct from the unrelated TPP1 gene on chromosome 11, which encodes tripeptidyl-peptidase I.

---

Note: This product is for in vitro research use only