

ASS1 Antibody

Catalog No: #46314

Orders: order@signalwayantibody.comSupport: tech@signalwayantibody.com

Description

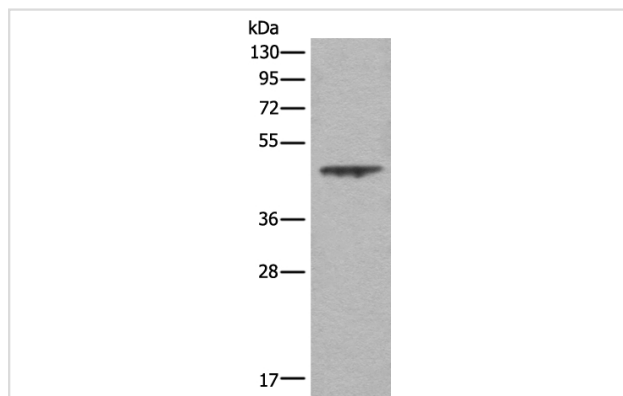
Product Name	ASS1 Antibody
Host Species	Rabbit
Clonality	Polyclonal
Purification	Antigen affinity purification
Applications	WB IHC
Species Reactivity	Hu
Specificity	The antibody detects endogenous levels of total ASS1 protein.
Immunogen Type	peptide
Immunogen Description	Synthetic protein corresponding to residues near the C terminal of human ASS1
Target Name	ASS1
Other Names	ASS; CTLN1
Accession No.	Swiss-Prot:P00966NCBI Gene ID:445NCBI Protein:BC021676
Uniprot	P00966
GeneID	445;
Calculated MW	47 kDa
Concentration	0.8mg/ml
Formulation	Rabbit IgG in pH7.4 PBS, 0.05% NaN ₃ , 40% Glycerol.
Storage	Store at -20°C

Application Details

Western blotting: 1:500-1:2000

Immunohistochemistry: 1: 25-100

Images

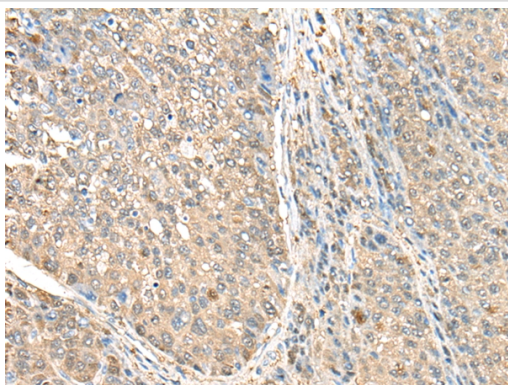


Gel: 8%SDS-PAGE

lysate: 40 B μ g, Lane: A431 cell lysate,Primary antibody: 46314B \times B \times ASS1 Antibody) at dilution 1/350

Secondary antibody: Goat anti rabbit IgG at 1/8000 dilution,

Exposure time: 10 seconds



The image on the left is immunohistochemistry of paraffin-embedded Human liver cancer tissue using 46314(ASS1 Antibody) at dilution 1/35, on the right is treated with fusion protein. (Original magnification: x200)

Background

The protein encoded by this gene catalyzes the penultimate step of the arginine biosynthetic pathway. There are approximately 10 to 14 copies of this gene including the pseudogenes scattered across the human genome, among which the one located on chromosome 9 appears to be the only functional gene for argininosuccinate synthetase. Mutations in the chromosome 9 copy of this gene cause citrullinemia. Two transcript variants encoding the same protein have been found for this gene.

Note: This product is for in vitro research use only