

# ATL3 Antibody

Catalog No: #46320



Orders: [order@signalwayantibody.com](mailto:order@signalwayantibody.com)  
Support: [tech@signalwayantibody.com](mailto:tech@signalwayantibody.com)

## Description

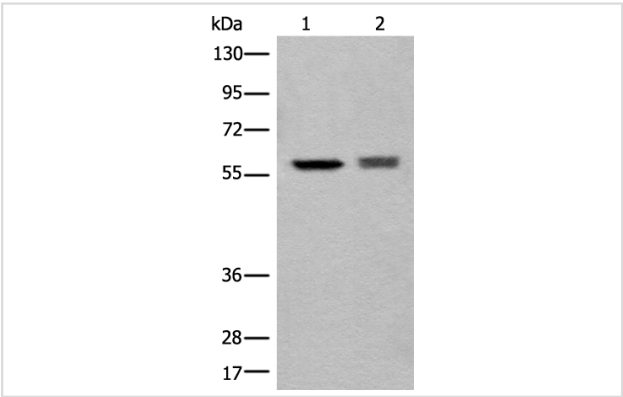
Product Name	ATL3 Antibody
Host Species	Rabbit
Clonality	Polyclonal
Purification	Antigen affinity purification
Applications	WB IHC
Species Reactivity	Hu
Specificity	The antibody detects endogenous levels of total ATL3 protein.
Immunogen Type	peptide
Immunogen Description	Synthetic protein corresponding to residues near the C terminal of human ATL3
Target Name	ATL3
Other Names	HSN1F
Accession No.	Swiss-Prot:Q6DD88NCBI Gene ID:25923NCBI Protein:BC077727
Uniprot	Q6DD88
GeneID	25923;
Calculated MW	61 kDa
Concentration	2mg/ml
Formulation	Rabbit IgG in pH7.4 PBS, 0.05% NaN3, 40% Glycerol.
Storage	Store at -20°C

## Application Details

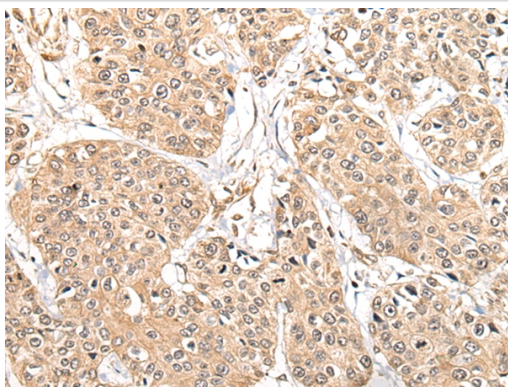
Western blotting: 1:500-1:2000

Immunohistochemistry: 1: 50-300

## Images



Gel: 8%SDS-PAGE  
Lysate: 40 µg/lane Lane 1-2:HEPG2 and Jurkat cell lysates  
Primary antibody: 46320(ATL3 Antibody) at dilution 1/8000  
Secondary antibody: Goat anti rabbit IgG at 1/8000 dilution  
Exposure time: 3 seconds



The image on the left is immunohistochemistry of paraffin-embedded Human prostate cancer tissue using 46320(ATL3 Antibody) at dilution 1/85, on the right is treated with fusion protein. (Original magnification: x200)

## Background

This gene encodes a member of a family of dynamin-like, integral membrane GTPases. The encoded protein is required for the proper formation of the network of interconnected tubules of the endoplasmic reticulum. Mutations in this gene may be associated with hereditary sensory neuropathy type IF. Alternatively spliced transcript variants that encode distinct isoforms have been described.

Note: This product is for in vitro research use only