

B3GALNT2 Antibody

Catalog No: #46326



Orders: [order@signalwayantibody.com](mailto:order@signalwayantibody.com)  
Support: [tech@signalwayantibody.com](mailto:tech@signalwayantibody.com)

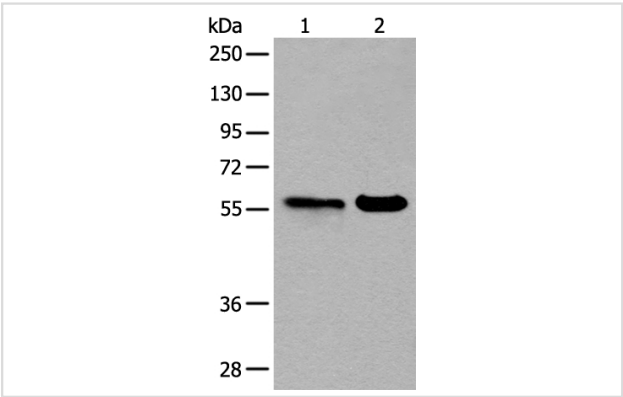
Description

Product Name	B3GALNT2 Antibody
Host Species	Rabbit
Clonality	Polyclonal
Purification	Antigen affinity purification
Applications	WB IHC
Species Reactivity	Hu
Specificity	The antibody detects endogenous levels of total B3GALNT2 protein.
Immunogen Type	peptide
Immunogen Description	Synthetic protein corresponding to residues near the C terminal of human B3GALNT2
Target Name	B3GALNT2
Other Names	MDDGA11; B3GalNAc-T2
Accession No.	Swiss-Prot:Q8NCR0NCBI Gene ID:148789NCBI Protein:BC029564
Uniprot	Q8NCR0
GeneID	148789;
Calculated MW	57 kDa
Concentration	0.6mg/ml
Formulation	Rabbit IgG in pH7.4 PBS, 0.05% NaN3, 40% Glycerol.
Storage	Store at -20°C

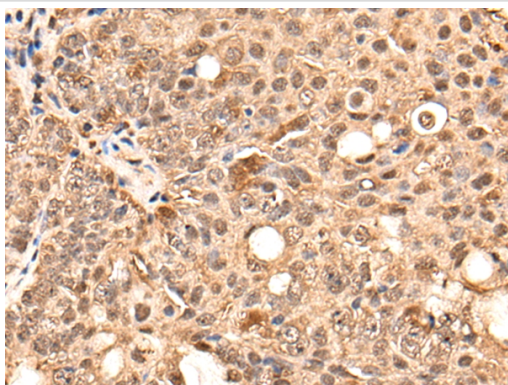
Application Details

Western blotting: 1:200-1:1000  
Immunohistochemistry: 1: 25-100

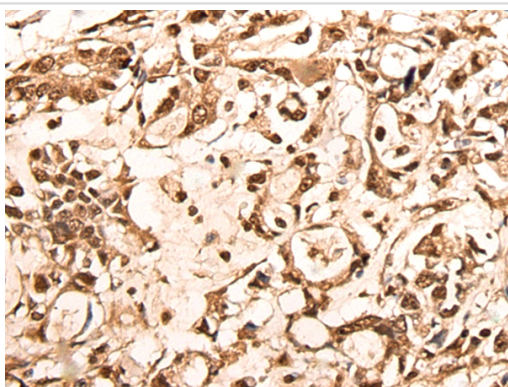
Images



Gel: 8%SDS-PAGE  
lysate: 40 B $\mu$ g, Lane 1-2: Human skin tissue and Human fetal brain tissue lysates,  
Primary antibody: 46326B $\times$ B3GALNT2 Antibody) at dilution 1/250  
Secondary antibody: Goat anti rabbit IgG at 1/8000 dilution,  
Exposure time: 90 seconds



The image on the left is immunohistochemistry of paraffin-embedded Human ovarian cancer tissue using 46326(B3GALNT2 Antibody) at dilution 1/30, on the right is treated with fusion protein. (Original magnification: x200)



The image on the left is immunohistochemistry of paraffin-embedded Human gastric cancer tissue using 46326(B3GALNT2 Antibody) at dilution 1/30, on the right is treated with fusion protein. (Original magnification: x200)

## Background

This gene encodes a member of the glycosyltransferase 31 family. The encoded protein synthesizes GalNAc:beta-1,3GlcNAc, a novel carbohydrate structure, on N- and O-glycans. Alternatively spliced transcript variants that encode different isoforms have been described.?

Note: This product is for in vitro research use only