

## BARX1 Antibody

Catalog No: #46331

Orders: [order@signalwayantibody.com](mailto:order@signalwayantibody.com)Support: [tech@signalwayantibody.com](mailto:tech@signalwayantibody.com)

## Description

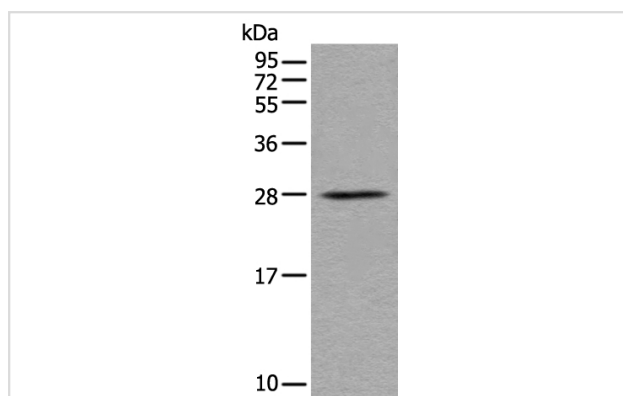
Product Name	BARX1 Antibody
Host Species	Rabbit
Clonality	Polyclonal
Purification	Antigen affinity purification
Applications	WB IHC
Species Reactivity	Hu
Specificity	The antibody detects endogenous levels of total BARX1 protein.
Immunogen Type	peptide
Immunogen Description	Synthetic protein corresponding to residues near the C terminal of human BARX1
Target Name	BARX1
Accession No.	Swiss-Prot:Q9ER42NCBI Gene ID:12022NCBI Protein:BC009458
Uniprot	Q9ER42
GeneID	12022;
Calculated MW	27 kDa
Concentration	0.8mg/ml
Formulation	Rabbit IgG in pH7.4 PBS, 0.05% NaN <sub>3</sub> , 40% Glycerol.
Storage	Store at -20°C

## Application Details

Western blotting: 1:200-1:1000

Immunohistochemistry: 1: 25-100

## Images



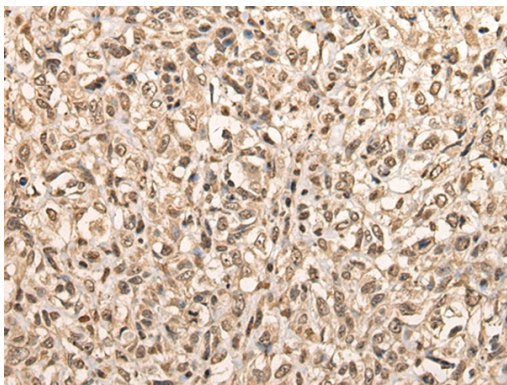
Gel: 12%SDS-PAGE

lysate: 40 B<sub>1</sub> g, Lane: Mouse stomach tissue lysate,

Primary antibody: 46331B£B"BARX1 Antibody) at dilution 1/300

Secondary antibody: Goat anti rabbit IgG at 1/8000 dilution,

Exposure time: 1 minute



The image on the left is immunohistochemistry of paraffin-embedded Human lung cancer tissue using 46331(BARX1 Antibody) at dilution 1/30, on the right is treated with fusion protein. (Original magnification: x200)

## Background

This gene encodes a member of the Bar subclass of homeobox transcription factors. Studies of the mouse and chick homolog suggest the encoded protein may play a role in developing teeth and craniofacial mesenchyme of neural crest origin. The protein may also be associated with differentiation of stomach epithelia.

Note: This product is for in vitro research use only