

DUSP15 antibody

Catalog No: #31930

Package Size: #31930-1 50ul #31930-2 100ul

Orders: order@signalwayantibody.comSupport: tech@signalwayantibody.com

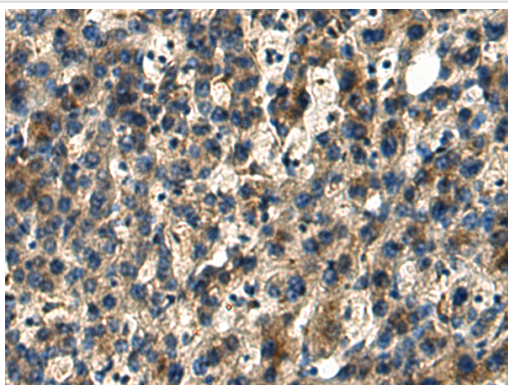
Description

Product Name	DUSP15 antibody
Host Species	Rabbit
Clonality	Polyclonal
Purification	Antigen affinity purification
Applications	IHC
Species Reactivity	Hu, Ms, Rt
Immunogen Description	Fusion protein of human DUSP15
Target Name	DUSP15
Other Names	VHY; C20orf57
Accession No.	NCBI Protein#:BC056911
Uniprot	Q9H1R2
GeneID	128853
Concentration	1mg/ml
Formulation	pH7.4 PBS, 0.05% NaN ₃ , 40% Glycerol
Storage	Store at -20°C/1 year

Application Details

IHC dilution:1:100-1:300

Images



The image is immunohistochemistry of paraffin-embedded Human liver cancer tissue using (Antibody) at dilution 1/140.

Background

The protein encoded by this gene has both protein-tyrosine phosphatase activity and serine/threonine-specific phosphatase activity, and therefore is known as a dual specificity phosphatase. This protein may function in the differentiation of oligodendrocytes. Alternative splicing results in multiple transcript variants.?

Note: This product is for in vitro research use only