

C1GALT1C1 Antibody

Catalog No: #46366

Orders: order@signalwayantibody.comSupport: tech@signalwayantibody.com

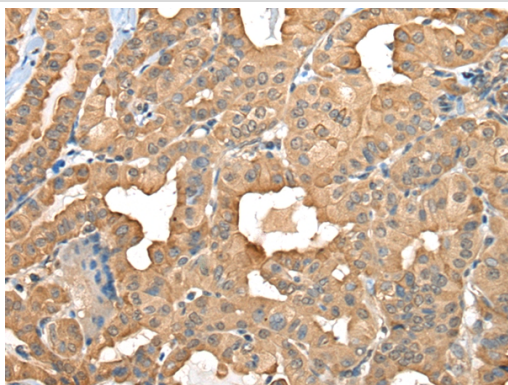
Description

Product Name	C1GALT1C1 Antibody
Host Species	Rabbit
Clonality	Polyclonal
Purification	Antigen affinity purification
Applications	IHC
Species Reactivity	Hu
Specificity	The antibody detects endogenous levels of total C1GALT1C1 protein.
Immunogen Type	peptide
Immunogen Description	Synthetic protein corresponding to residues near the C terminal of human C1GALT1C1
Target Name	C1GALT1C1
Other Names	TNPS; COSMC; MST143; C1GALT2; HSPC067; C38H2-L1
Accession No.	Swiss-Prot:Q96EU7NCBI Gene ID:29071NCBI Protein:BC011930
Uniprot	Q96EU7
GeneID	29071;
Concentration	1.1mg/ml
Formulation	Rabbit IgG in pH7.4 PBS, 0.05% NaN ₃ , 40% Glycerol.
Storage	Store at -20°C

Application Details

Immunohistochemistry: 1: 50-300

Images



The image on the left is immunohistochemistry of paraffin-embedded Human thyroid cancer tissue using 46366(C1GALT1C1 Antibody) at dilution 1/45, on the right is treated with fusion protein. (Original magnification: x200)

Background

This gene encodes a type II transmembrane protein that is similar to the core 1 beta1,3-galactosyltransferase 1, which catalyzes the synthesis of the core-1 structure, also known as Thomsen-Friedenreich antigen, on O-linked glycans. This gene product lacks the galactosyltransferase activity itself, but instead acts as a molecular chaperone required for the folding, stability and full activity of the core 1 beta1,3-galactosyltransferase 1. Mutations in this gene have been associated with Tn syndrome. Alternatively spliced transcript variants encoding the same protein have been identified.

Note: This product is for in vitro research use only