

ZWINT Polyclonal Antibody

Catalog No: #29079

Package Size: #29079-1 50ul #29079-2 100ul

Orders: order@signalwayantibody.comSupport: tech@signalwayantibody.com

Description

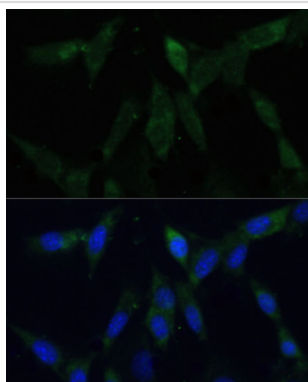
| | |
|-----------------------|---|
| Product Name | ZWINT Polyclonal Antibody |
| Host Species | Rabbit |
| Clonality | Polyclonal |
| Isotype | IgG |
| Purification | Affinity purification |
| Applications | WB,IF |
| Species Reactivity | Human,Mouse,Rat |
| Immunogen Type | Recombinant Protein |
| Immunogen Description | Recombinant fusion protein of human ZWINT (NP_008988.2). |
| Other Names | ZWINT; HZwint-1; KNTC2AP; SIP30; ZWINT1; ZW10 interactor |
| Accession No. | Gene ID: 11130Swiss Prot: O95229 |
| Uniprot | O95229 |
| GeneID | 11130; |
| Calculated MW | 39kDa |
| Storage | Store at -20oC. Avoid freeze / thaw cycles. Buffer: PBS with 50% glycerol, pH7.3. |

Application Details

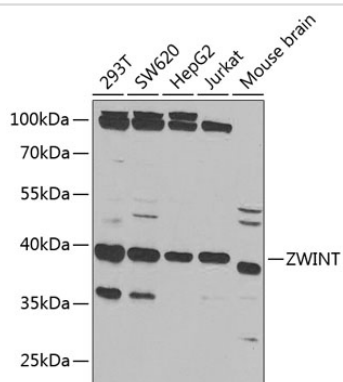
WB 1:500 - 1:2000

IF 1:50 - 1:200

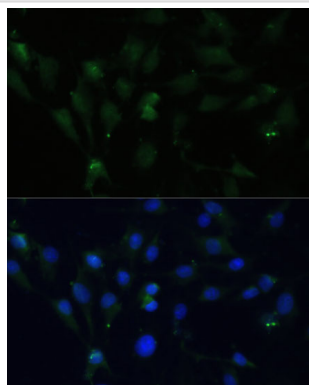
Images



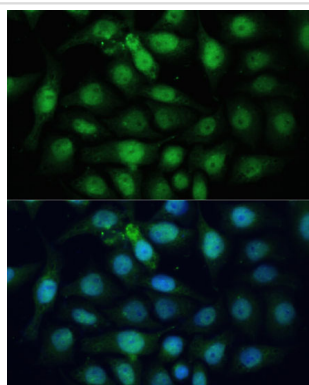
Immunofluorescence analysis of NIH-3T3 cells using ZWINT Polyclonal at dilution of 1:100 (40x lens). Blue: DAPI for nuclear staining.



Western blot analysis of extracts of various cell lines, using ZWINT at 1:1000 dilution.



Immunofluorescence analysis of C6 cells using ZWINT Polyclonal at dilution of 1:100 (40x lens). Blue: DAPI for nuclear staining.



Immunofluorescence analysis of HeLa cells using ZWINT Polyclonal at dilution of 1:100 (40x lens). Blue: DAPI for nuclear staining.

Background

This gene encodes a protein that is clearly involved in kinetochore function although an exact role is not known. It interacts with ZW10, another kinetochore protein, possibly regulating the association between ZW10 and kinetochores. The encoded protein localizes to prophase kinetochores before ZW10 does and it remains detectable on the kinetochore until late anaphase. It has a uniform distribution in the cytoplasm of interphase cells. Alternatively spliced transcript variants encoding different isoforms have been found for this gene.

Note: This product is for in vitro research use only