

COL7A1 Polyclonal Antibody

Catalog No: #21820

Orders: order@signalwayantibody.comSupport: tech@signalwayantibody.com

Description

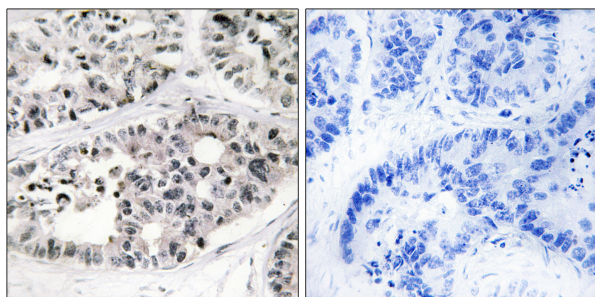
Product Name	COL7A1 Polyclonal Antibody
Host Species	Rabbit
Clonality	Polyclonal
Purification	The antibody was affinity-purified from rabbit antiserum by affinity-chromatography using epitope-specific immunogen.
Applications	IHC IF
Species Reactivity	Hu, Ms
Specificity	COL7A1 Polyclonal Antibody detects endogenous levels of COL7A1 protein.
Immunogen Description	The antiserum was produced against synthesized peptide derived from human Collagen VII alpha1. AA range:1841-1890
Other Names	COL7A1; Collagen alpha-1(VII) chain; Long-chain collagen; LC collagen
Accession No.	Swiss-Prot#:Q02388NCBI Gene ID:1294
Uniprot	Q02388
GeneID	1294;
Calculated MW	295kDa
Concentration	1.0mg/ml
Formulation	Liquid in PBS containing 50% glycerol, 0.5% BSA and 0.02% sodium azide.
Storage	Store at -20°C/1 year

Application Details

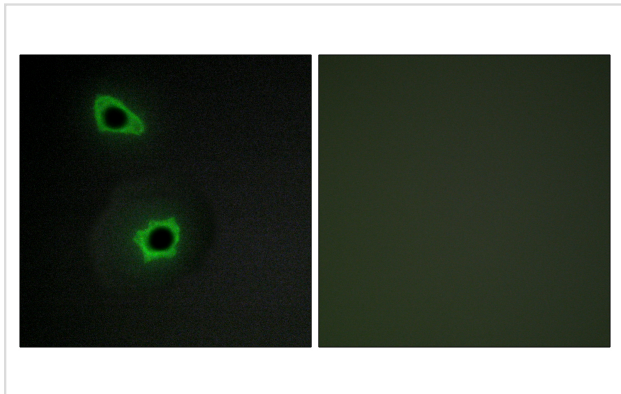
IHC dilution: 1:100-1:300

IF dilution:1:200-1:1000

Images



Immunohistochemistry analysis of paraffin-embedded human lung carcinoma tissue, using Collagen VII alpha1 Antibody. The picture on the right is blocked with the synthesized peptide.



Immunofluorescence analysis of COS7 cells, using Collagen VII alpha1 Antibody. The picture on the right is blocked with the synthesized peptide.

Background

collagen type VII alpha 1 chain(COL7A1) Homo sapiens This gene encodes the alpha chain of type VII collagen. The type VII collagen fibril, composed of three identical alpha collagen chains, is restricted to the basement zone beneath stratified squamous epithelia. It functions as an anchoring fibril between the external epithelia and the underlying stroma. Mutations in this gene are associated with all forms of dystrophic epidermolysis bullosa. In the absence of mutations, however, an acquired form of this disease can result from an autoimmune response made to type VII collagen. [provided by RefSeq, Jul 2008],

Note: This product is for in vitro research use only