

## CCL27 Antibody

Catalog No: #46423

Orders: [order@signalwayantibody.com](mailto:order@signalwayantibody.com)Support: [tech@signalwayantibody.com](mailto:tech@signalwayantibody.com)

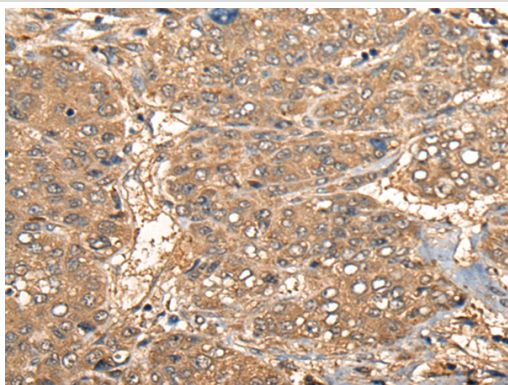
## Description

Product Name	CCL27 Antibody
Host Species	Rabbit
Clonality	Polyclonal
Purification	Antigen affinity purification
Applications	IHC
Species Reactivity	Hu
Specificity	The antibody detects endogenous levels of total CCL27 protein.
Immunogen Type	peptide
Immunogen Description	Synthetic peptide corresponding to residues near the C terminal of human CCL27
Target Name	CCL27
Other Names	ALP; ILC; CTAK; CTACK; PESKY; ESKINE; SCYA27
Accession No.	Swiss-Prot:Q9Y4X3 NCBI Gene ID:10850NCBI Protein:NP_006655
Uniprot	Q9Y4X3
GeneID	10850;
Concentration	2.2mg/ml
Formulation	Rabbit IgG in pH7.4 PBS, 0.05% NaN <sub>3</sub> , 40% Glycerol.
Storage	Store at -20°C

## Application Details

Immunohistochemistry: 1: 50-300

## Images



The image on the left is immunohistochemistry of paraffin-embedded Human liver cancer tissue using 46423(CCL27 Antibody) at dilution 1/55, on the right is treated with synthetic peptide. (Original magnification: x200)

## Background

This gene is one of several CC cytokine genes clustered on the p-arm of chromosome 9. Cytokines are a family of secreted proteins involved in immunoregulatory and inflammatory processes. The CC cytokines are proteins characterized by two adjacent cysteines. The protein encoded by this gene is chemotactic for skin-associated memory T lymphocytes. This cytokine may also play a role in mediating homing of lymphocytes to cutaneous sites. It specifically binds to chemokine receptor 10 (CCR10). Studies of a similar murine protein indicate that these protein-receptor interactions have

a pivotal role in T cell-mediated skin inflammation.?

---

Note: This product is for in vitro research use only