

## CCT6B Antibody

Catalog No: #46430

Orders: [order@signalwayantibody.com](mailto:order@signalwayantibody.com)Support: [tech@signalwayantibody.com](mailto:tech@signalwayantibody.com)

## Description

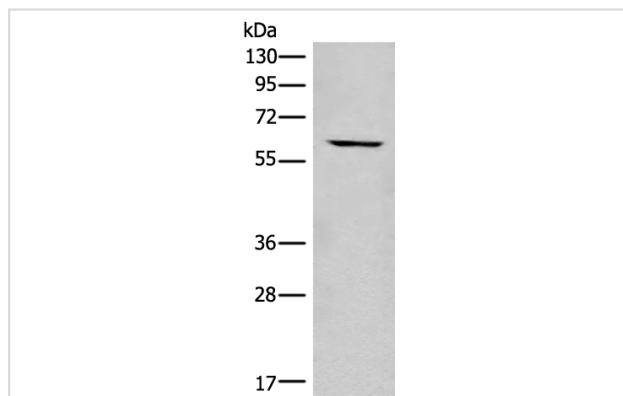
Product Name	CCT6B Antibody
Host Species	Rabbit
Clonality	Polyclonal
Purification	Antigen affinity purification
Applications	WB IHC
Species Reactivity	Hu
Specificity	The antibody detects endogenous levels of total CCT6B protein.
Immunogen Type	peptide
Immunogen Description	Synthetic protein corresponding to residues near the C terminal of human CCT6B
Target Name	CCT6B
Other Names	Cctz2; CCTZ-2; TSA303; CCT-zeta-2; TCP-1-zeta-2
Accession No.	Swiss-Prot:Q92526NCBI Gene ID:10693NCBI Protein:BC026125
Uniprot	Q92526
GeneID	10693;
Calculated MW	58 kDa
Concentration	0.7mg/ml
Formulation	Rabbit IgG in pH7.4 PBS, 0.05% NaN <sub>3</sub> , 40% Glycerol.
Storage	Store at -20°C

## Application Details

Western blotting: 1:200-1:1000

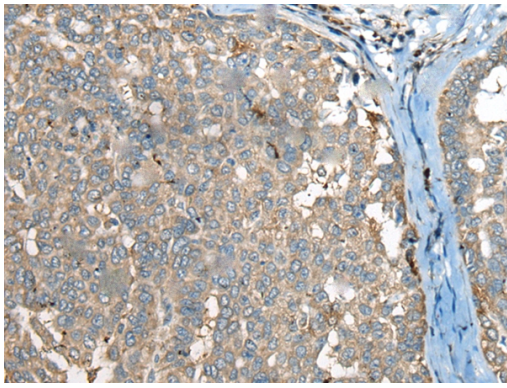
Immunohistochemistry: 1: 40-200

## Images



Gel: 8%SDS-PAGE

lysate: 40 B<sub>2</sub>g, Lane: 293T cell lysate,Primary antibody: 46430B<sub>2</sub>B<sub>2</sub>CCT6B Antibody) at dilution 1/400Secondary antibody: Goat anti rabbit IgG at 1/8000 dilution,  
Exposure time: 25 seconds



The image on the left is immunohistochemistry of paraffin-embedded Human liver cancer tissue using 46430(CCT6B Antibody) at dilution 1/50, on the right is treated with fusion protein. (Original magnification: x200)

## Background

This gene encodes a molecular chaperone that is a member of the chaperonin-containing TCP1 complex (CCT), also known as the TCP1 ring complex (TRiC). This complex consists of two identical stacked rings, each containing eight different proteins. Unfolded polypeptides enter the central cavity of the complex and are folded in an ATP-dependent manner. The complex folds various proteins, including actin and tubulin. Alternative splicing results in multiple transcript variants.

Note: This product is for in vitro research use only