

CHCHD3 Antibody

Catalog No: #46485



Orders: order@signalwayantibody.com
Support: tech@signalwayantibody.com

Description

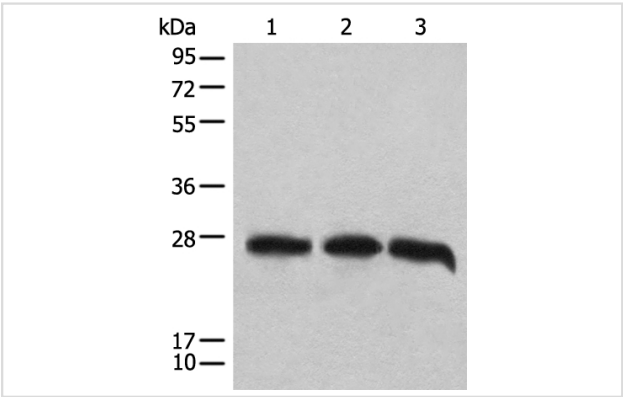
Product Name	CHCHD3 Antibody
Host Species	Rabbit
Clonality	Polyclonal
Purification	Antigen affinity purification
Applications	WB IHC
Species Reactivity	Hu
Specificity	The antibody detects endogenous levels of total CHCHD3 protein.
Immunogen Type	peptide
Immunogen Description	Full length fusion protein of human CHCHD3
Target Name	CHCHD3
Other Names	Mic19; MINOS3; PPP1R22
Accession No.	Swiss-Prot:Q9NX63NCBI Gene ID:54927NCBI Protein:BC011596
Uniprot	Q9NX63
GeneID	54927;
Calculated MW	26 kDa
Concentration	1.1mg/ml
Formulation	Rabbit IgG in pH7.4 PBS, 0.05% NaN3, 40% Glycerol.
Storage	Store at -20°C

Application Details

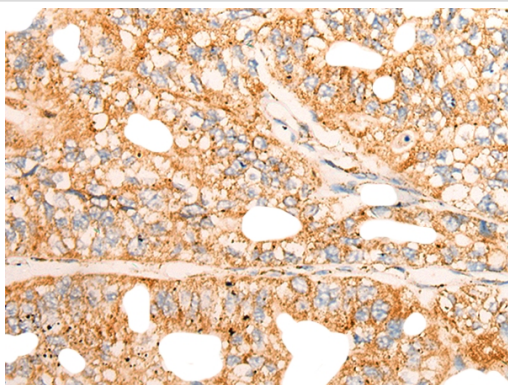
Western blotting: 1:1000-1:5000

Immunohistochemistry: 1: 30-150

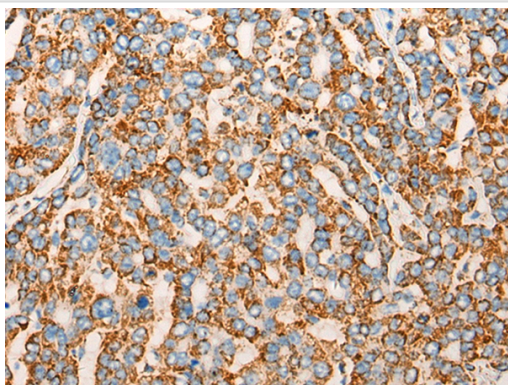
Images



Gel: 12%SDS-PAGE
lysate: 40 B μ g, Lane 1-3: HEPG2B \times B-A549 and 293T cell lysates,
Primary antibody: 46485B \times B-CHCHD3 Antibody) at dilution 1/1000
Secondary antibody: Goat anti rabbit IgG at 1/8000 dilution,
Exposure time: 5 seconds



The image on the left is immunohistochemistry of paraffin-embedded Human gastric cancer tissue using 46485(CHCHD3 Antibody) at dilution 1/45, on the right is treated with fusion protein. (Original magnification: x200)



The image on the left is immunohistochemistry of paraffin-embedded Human liver cancer tissue using 46485(CHCHD3 Antibody) at dilution 1/45, on the right is treated with fusion protein. (Original magnification: x200)

Background

The protein encoded by this gene is an inner mitochondrial membrane scaffold protein. Absence of the encoded protein affects the structural integrity of mitochondrial cristae and leads to reductions in ATP production, cell growth, and oxygen consumption. This protein is part of the mitochondrial contact site and cristae organizing system (MICOS). Several transcript variants encoding different isoforms have been found for this gene.

Note: This product is for in vitro research use only