

## GLI2 Polyclonal Antibody

Catalog No: #29217

Package Size: #29217-1 50ul #29217-2 100ul

Orders: [order@signalwayantibody.com](mailto:order@signalwayantibody.com)Support: [tech@signalwayantibody.com](mailto:tech@signalwayantibody.com)

## Description

Product Name	GLI2 Polyclonal Antibody
Host Species	Rabbit
Clonality	Polyclonal
Isotype	IgG
Purification	Affinity purification
Applications	WB,IHC,IF
Species Reactivity	Hu,Ms,Rt
Immunogen Description	Recombinant protein of mouse GLI2.
Other Names	GLI2;CJS;HPE9;PHS2;THP1;THP2;Gli2
Accession No.	Swiss-Prot#: P10070NCBI Gene ID: 14633
Uniprot	P10070
GeneID	2736;;
Calculated MW	168kDa
Formulation	PBS with 0.02% sodium azide,50% glycerol,pH7.3.
Storage	Store at -20°C. Avoid freeze / thaw cycles.

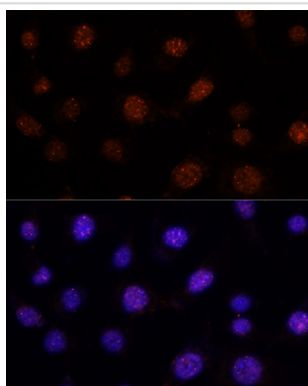
## Application Details

WB Dilution: □ 1:500 - 1:2000

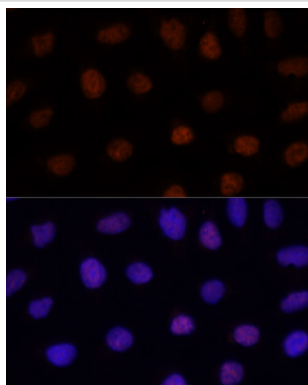
IHC Dilution: □ 1:50 - 1:100

IF Dilution: □ 1:50 - 1:100

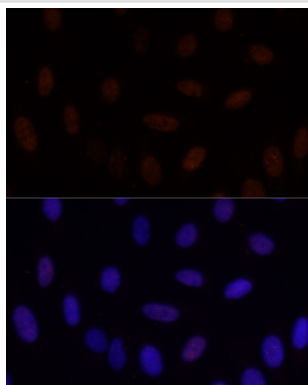
## Images



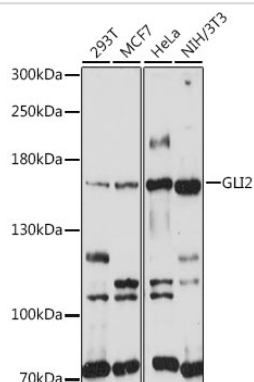
Immunofluorescence analysis of L-929 cells using GLI2 antibody at dilution of 1:100. Blue: DAPI for nuclear staining.



Immunofluorescence analysis of U-2 OS cells using GLI2 antibody at dilution of 1:100. Blue: DAPI for nuclear staining.



Immunofluorescence analysis of U-2 OS cells using GLI2 antibody at dilution of 1:100. Blue: DAPI for nuclear staining.



Western blot analysis of extracts of various cell lines, using GLI2 antibody at 1:1000 dilution.

## Background

This gene encodes a protein which belongs to the C2H2-type zinc finger protein subclass of the Gli family. Members of this subclass are characterized as transcription factors which bind DNA through zinc finger motifs. These motifs contain conserved H-C links. Gli family zinc finger proteins are mediators of Sonic hedgehog (Shh) signaling and they are implicated as potent oncogenes in the embryonal carcinoma cell. The protein encoded by this gene localizes to the cytoplasm and activates patched Drosophila homolog (PTCH) gene expression. It is also thought to play a role during embryogenesis. The encoded protein is associated with several phenotypes- Greig cephalopolysyndactyly syndrome, Pallister-Hall syndrome, preaxial polydactyly type IV, postaxial polydactyly types A1 and B.

Note: This product is for in vitro research use only