

CHODL Antibody

Catalog No: #46493

Orders: order@signalwayantibody.comSupport: tech@signalwayantibody.com

Description

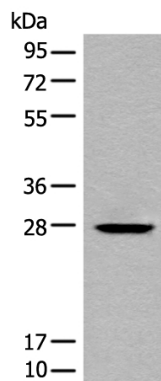
Product Name	CHODL Antibody
Host Species	Rabbit
Clonality	Polyclonal
Purification	Antigen affinity purification
Applications	WB IHC
Species Reactivity	Hu Ms
Specificity	The antibody detects endogenous levels of total CHODL protein.
Immunogen Type	peptide
Immunogen Description	Synthetic peptide corresponding to internal residues of human CHODL
Target Name	CHODL
Other Names	MT75; PRED12; C21orf68
Accession No.	Swiss-Prot:Q9H9P2NCBI Gene ID:140578NCBI Protein:NP_079220
Uniprot	Q9H9P2
GeneID	140578;
Calculated MW	30 kDa
Concentration	0.5mg/ml
Formulation	Rabbit IgG in pH7.4 PBS, 0.05% NaN ₃ , 40% Glycerol.
Storage	Store at -20°C

Application Details

Western blotting: 1:200-1:1000

Immunohistochemistry: 1: 10-50

Images

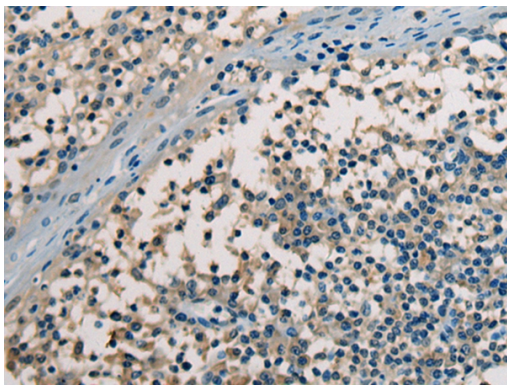


Gel: 12%SDS-PAGE

lysate: 40 µg, Lane: Mouse kidney tissue lysate,

Primary antibody: 46493B (CHODL Antibody) at dilution 1/300

Secondary antibody: Goat anti rabbit IgG at 1/8000 dilution,
Exposure time: 20 seconds



The image on the left is immunohistochemistry of paraffin-embedded Human tonsil tissue using 46493(CHODL Antibody) at dilution 1/20, on the right is treated with synthetic peptide. (Original magnification: x200)

Background

This gene encodes a type I membrane protein with a carbohydrate recognition domain characteristic of C-type lectins in its extracellular portion. In other proteins, this domain is involved in endocytosis of glycoproteins and exogenous sugar-bearing pathogens. This protein localizes predominantly to the perinuclear region. Several transcript variants encoding a few different isoforms have been found for this gene.

Note: This product is for in vitro research use only